



1100 RUE BÉGIN

SAINT-LAURENT, (QUÉBEC)

INDUSTRIEL - À LOUER
INDUSTRIAL - FOR LEASE

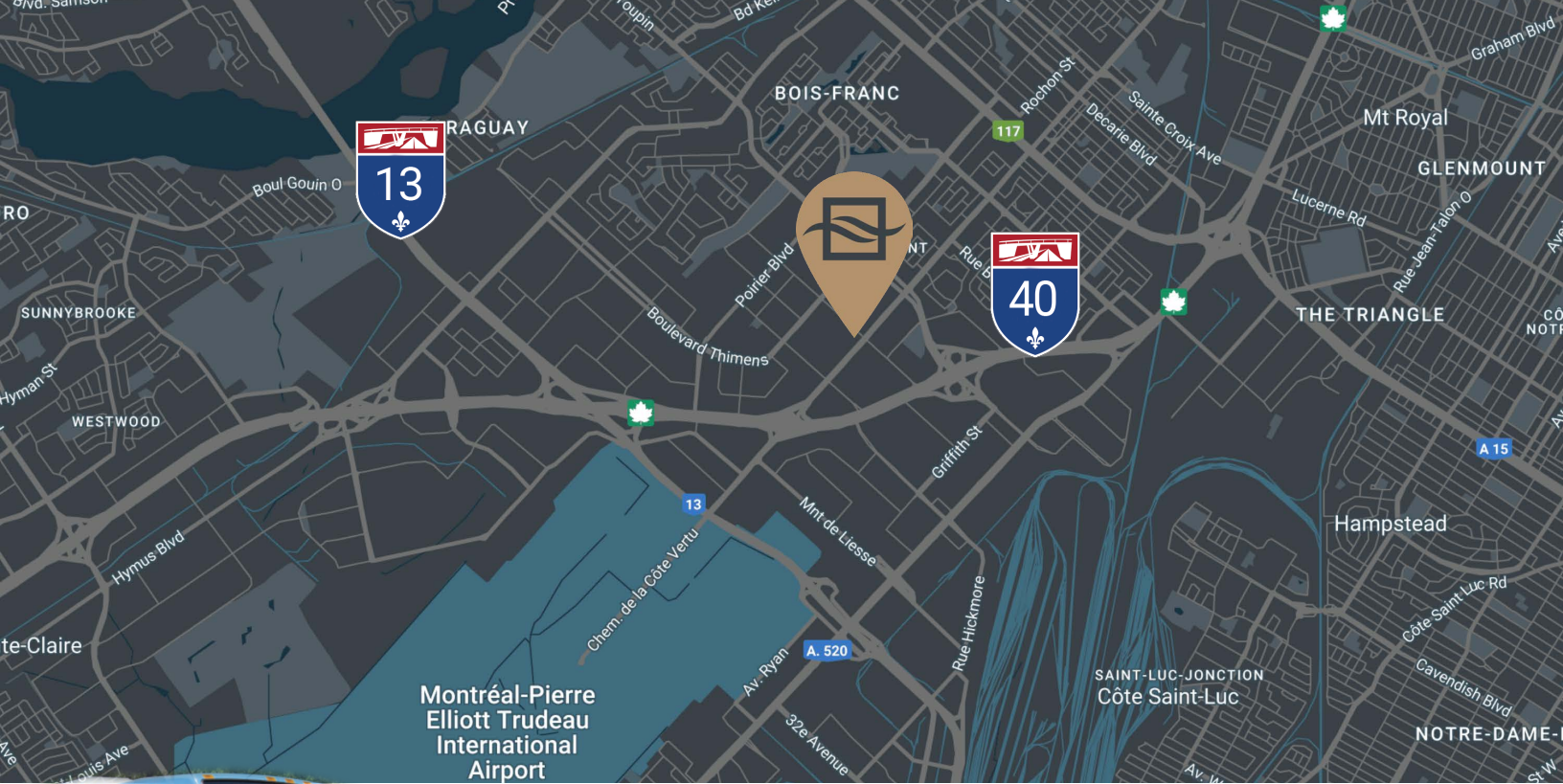
13 500 PI. CA. DISPONIBLES - 13 500 SQ. FT. AVAILABLE

- **Vaste espace de bureau et d'entreposage** | Large office area and warehousing
- **Espace divisible** | Divisible space
- **2 quais de chargement** | 2 loading docks
- **Proche de l'aéroport P-E Trudeau** | Close to the P-E Trudeau airport
- **Proche de l'autoroute 40 et 13** | Close to Highway 40 and 13



BRASSWATER

245, avenue Victoria,
Suite 801
Westmount, Qc | H3Z 2M6
T: +1 514 535 4444
www.brasswater.ca



 177,196

 Métro Côte-Vertu

EDUCATION

 27,320 BAC

5KM

 178,750

 \$79,423

TRANSPORT

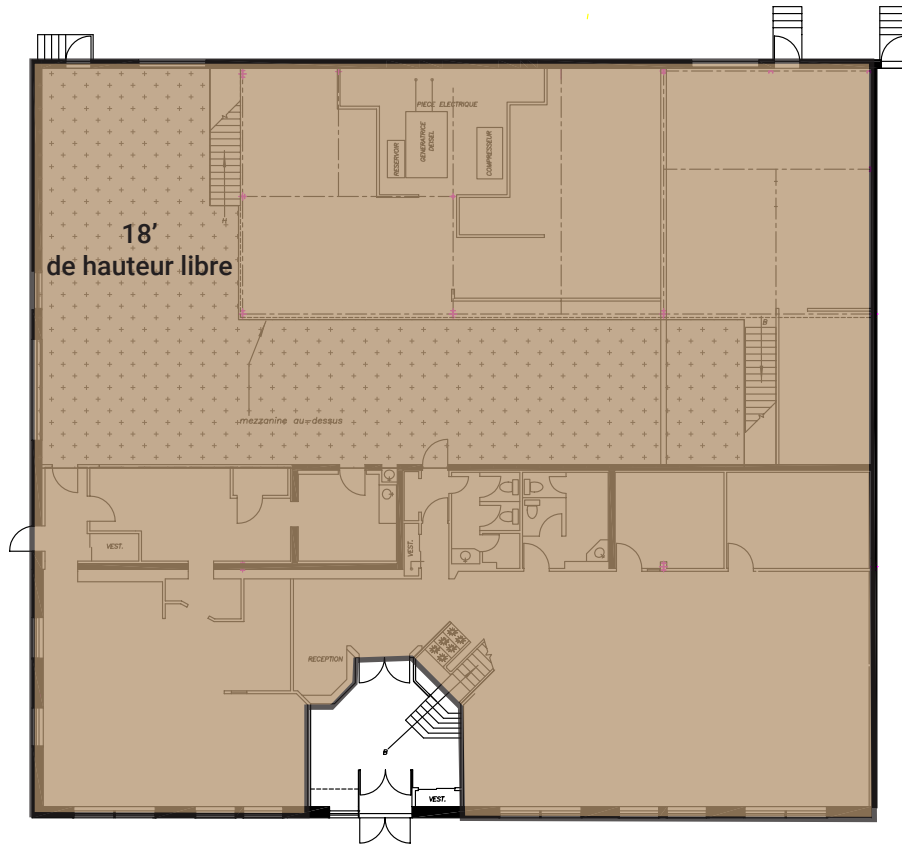
ACCÈS FACILE À L'AUTOROUTE  ET/AND  EASY HIGHWAY ACCESS

SERVICES ET COMMODITÉS | SERVICES AND AMENITIES

BANQUES BANKS	RESTAURANTS	COMMERCE SHOPS	HOTELS
DESJARDINS CIBC TD CANADA TRUST SCOTIA BANK RBC ROYAL BANK BMO BANK OF MONTREAL	STARBUCKS AMIR LA CAGE MCDONALD'S NOTRE BOEUF-DE-GRÂCE TIM HORTON'S SUSHI SHOP SUBWAYS SOUVLAKI BAR	CANADIAN TIRE SPORTS EXPERTS PLACE VERTU ADONIS DOLLARAMA WALMART GOLD'S GYM CINEMA GUZZO MEGA CENTRE COTE VERTU ENTREPÔT L'ORÉAL SHELL	MARIOTT BEST WESTERN HILTON GARDEN DAYS INN RADISSON QUALITY CROWN PLAZA

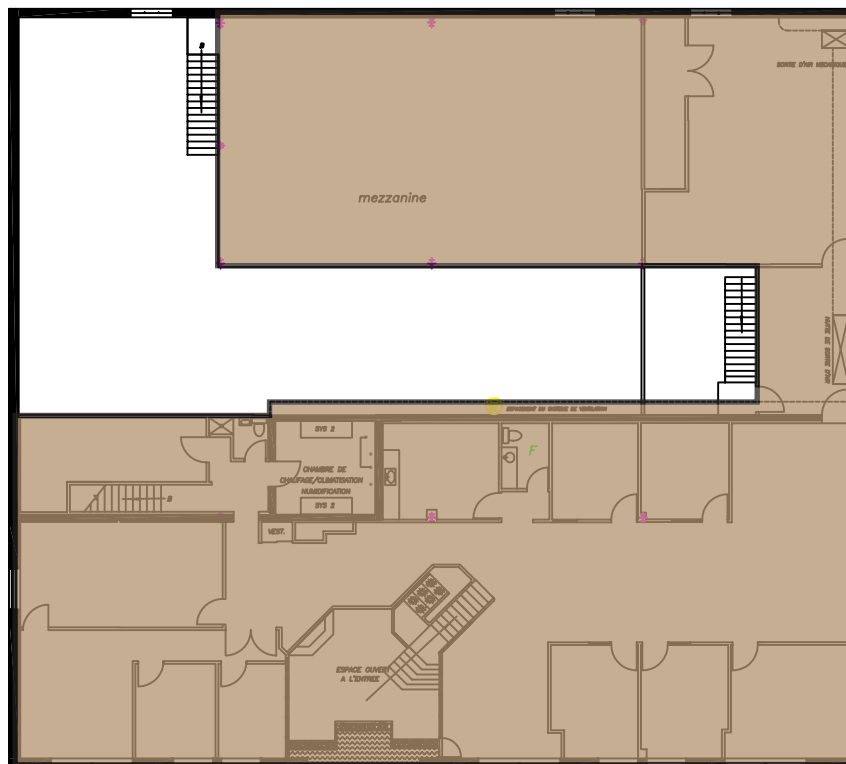
REZ-DE-CHAUSSÉE

9 000 pi. ca.



MEZZANINE

4 500 pi. ca.





CONTACTEZ-NOUS | CONTACT US

VICTORIA TENENBOYM

Directrice principale à la location
Senior leasing director

T: +1 514 894 6505
vtenenboym@brasswater.ca

PIERRE PAQUETTE

Directeur à la location et opérations
Director of leasing and operations

T: +1 514 570 2557
ppaquette@brasswater.ca

ÉQUIPE DE LOCATION LEASING TEAM

T: +1 514 535 4444
leasing@brasswater.ca



BRASSWATER

245, avenue Victoria,
Suite 801
Westmount, Qc | H3Z 2M6

T: +1 514 535 4444
www.brasswater.ca