



# 7405 TRANSCANADIENNE SAINT-LAURENT (QUÉBEC)

**BUREAU - À LOUER**  
**OFFICE - FOR LEASE**

*JUSQU'À 17 500 PI. CA. - UP TO 17 500 SQ. FT.*

- **Transport en commun accessible** | *Easy acces to public transport*
- **Stationnement intérieur** | *Indoor parking*
- **Restaurant intérieur** | *Indoor restaurant*
- **Près du centre d'achat place vertu** | *Next to the Place Vertu mall*
- **Excellente visibilité à partir de l'autoroute** | *Exellent visibility from the highway*

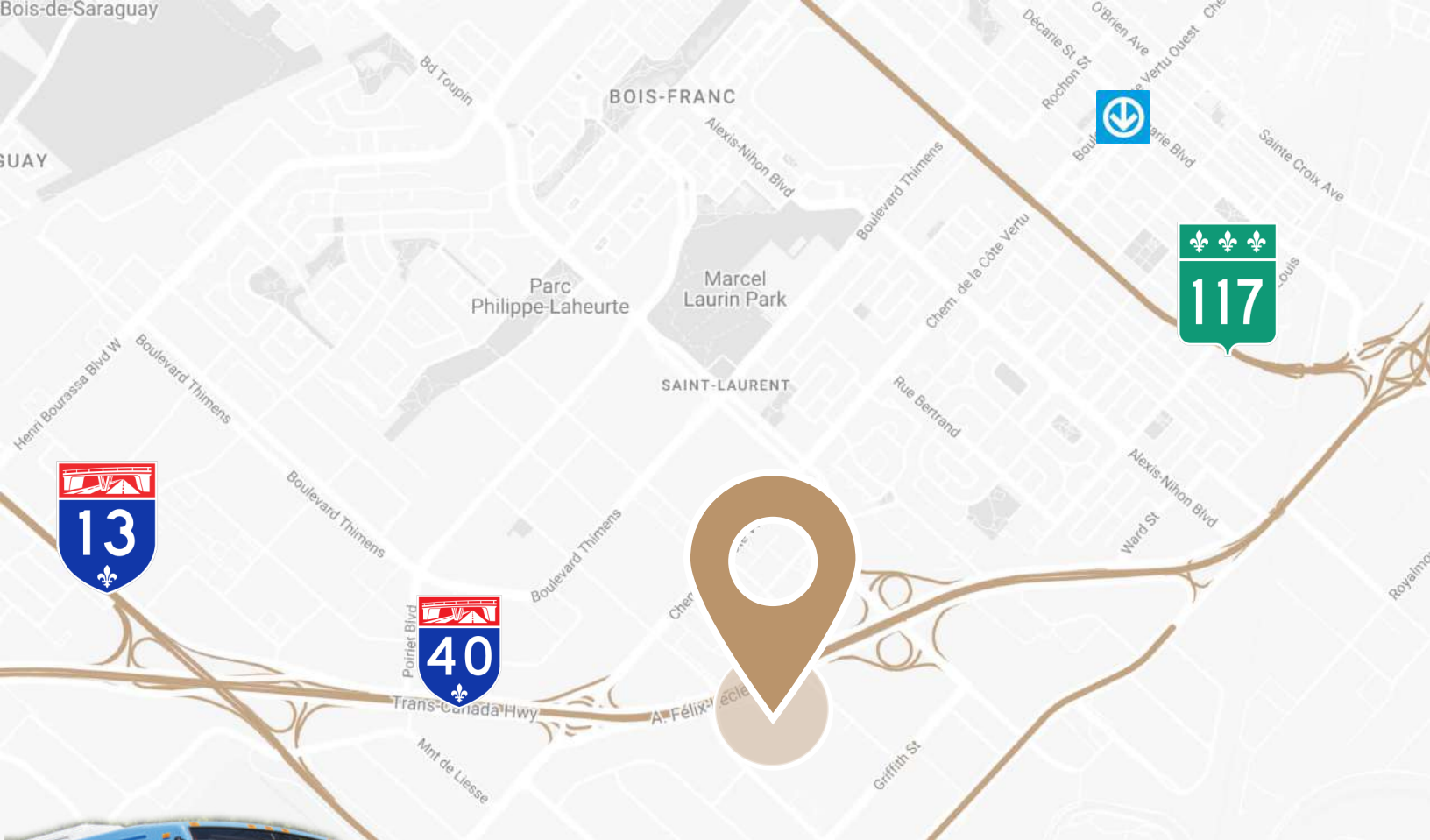


**BRASSWATER**

245, avenue Victoria,  
Suite 801  
Westmount, Qc | H3Z 2M6  
T: +1 514 535 4444  
[www.brasswater.ca](http://www.brasswater.ca)





<b>Zonage</b> Zoning	<b>Bureau   Office</b>
<b>Surfaces disponibles (pi<sup>2</sup>)</b> Available Areas (sq. ft.)	<b>30 581</b>
<b>Étage</b> Floor	<b>4</b>
<b>Stationnement intérieur</b> Interior Parking	<b>28</b>
<b>Stationnement extérieur</b> Exterior Parking	<b>288</b>



 177,196  
 Métro Côte-Vertu

**ÉDUCATION**  
 27 320 BAC

**ÉDUCATION**  
 178 750  
 \$79, 423

# TRANSPORT

ACCÈS FACILE À L'AUTORO

ET/AND

EASY HIGHWAY ACCESS

# SERVICES ET COMMODITÉS | SERVICES AND AMENITIES

## BANQUES | BANKS

DESJARDINS  
 CIBC  
 TD CANADA TRUST  
 SCOTIA BANK

## RESTAURANTS

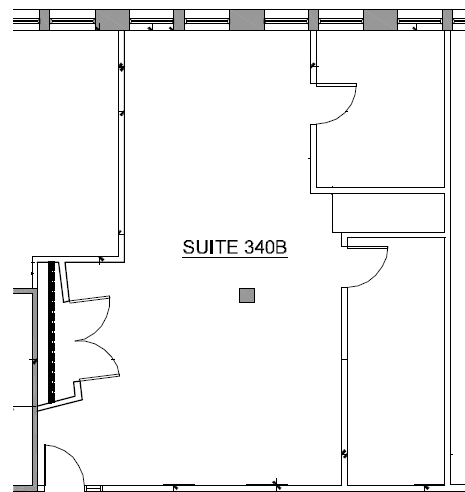
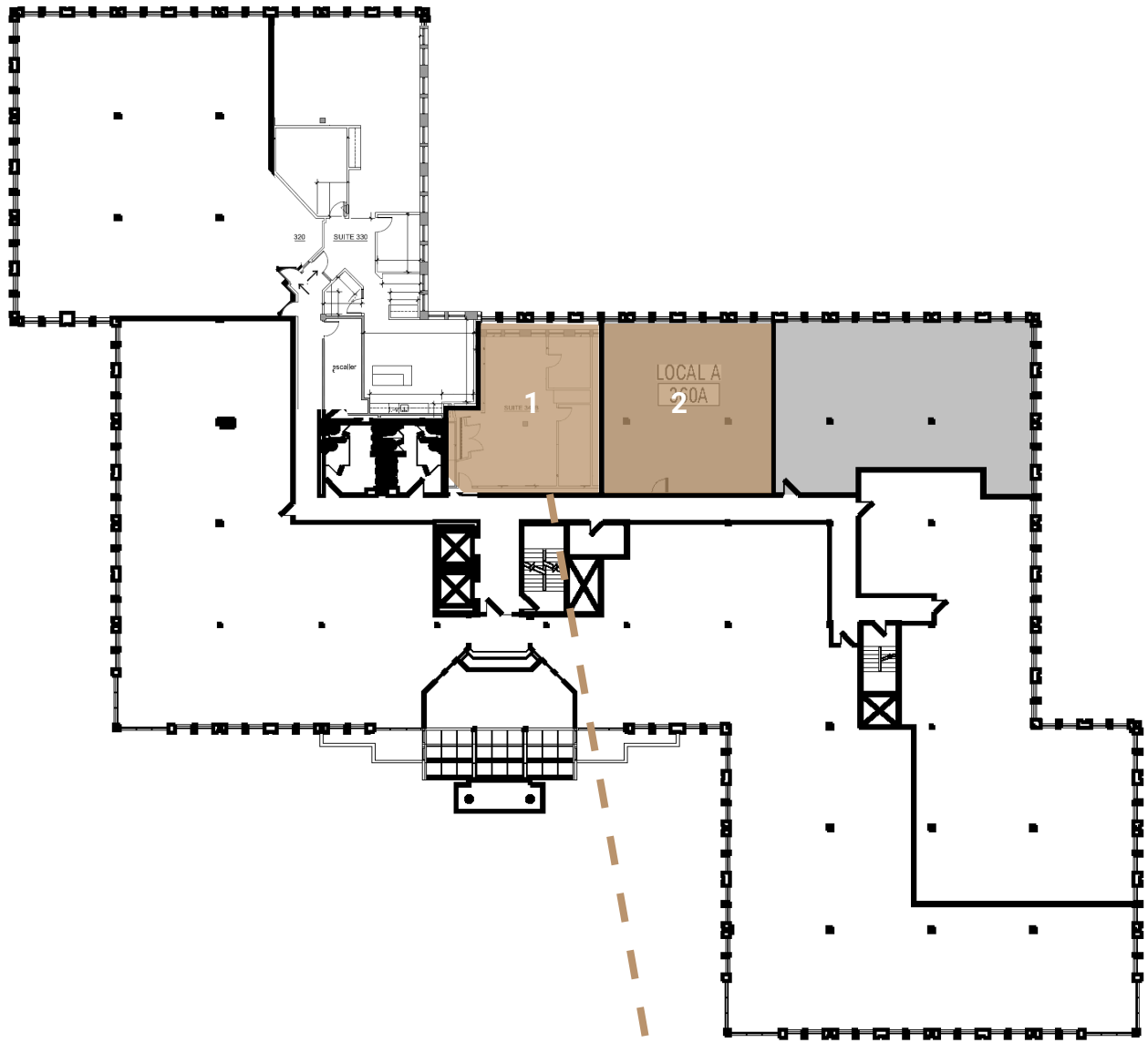
STARBUCKS  
 SUBWAY  
 LA CAGE  
 MCDONALD'S  
 NOTRE BOEUF-DE-GRÂCE  
 TIM HORTON'S  
 SUSHI SHOP

## COMMERCE | SHOPS

CANADIAN TIRE  
 SPORTS EXPERTS  
 PLACE VERTU  
 ADONIS  
 DOLLARAMA  
 JOE FRESH  
 URBAN PLANET  
 TOYS R US  
 WALMART  
 DOLLARAMA

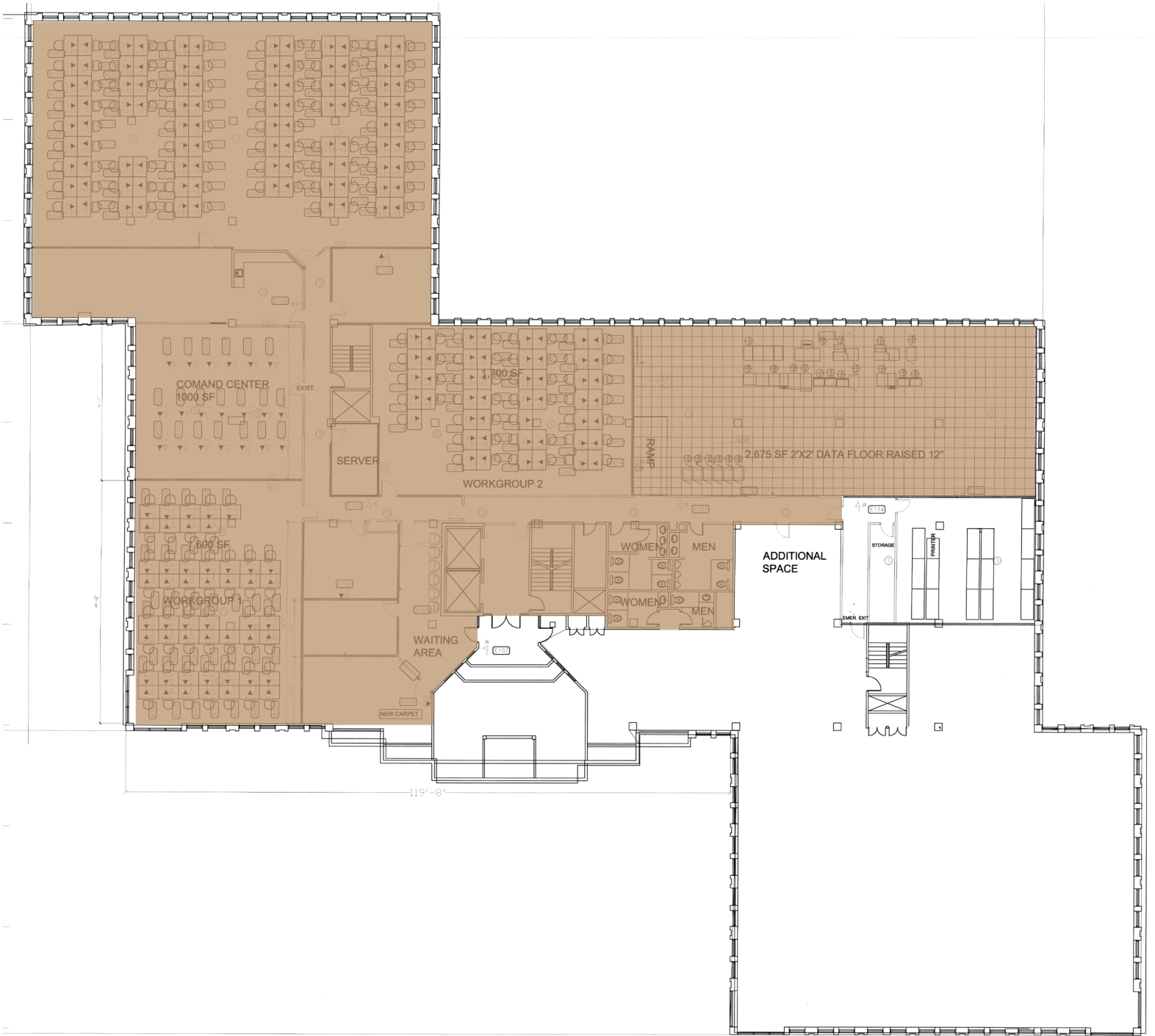
## HOTELS

MARIOTT  
 BEST WESTERN  
 HILTON GARDEN



**3em étage | 3rd floor**

- 1 835 Pi. Ca. | 835 Sq. Ft.
- 2 1 085 Pi. Ca. | 1 085 Sq. Ft.



**2em étage | 2nd floor**  
 17 500 Pi. Ca. | 17 500 Sq. Ft.



**Rez-de-Chaussée**  
Ground level

8 946 Pi. Ca. | 8 946 Sq. Ft.



## CONTACTEZ-NOUS – CONTACT US

### **JORDAN ALTMAN**

Agent a la location  
Leasing Agent

T: +1 514 775 1234  
jaltman@brasswater.ca

---

### **ÉQUIPE DE LOCATION LEASING TEAM**

T: +1 514 535 4444  
leasing@brasswater.ca



**BRASSWATER**

245, avenue Victoria,  
Suite 801  
Westmount, Qc | H3Z 2M6  
T: +1 514 535 4444  
www.brasswater.ca