



2000 BOUL. INDUSTRIEL CHAMBLY, QC

INDUSTRIEL - À LOUER
INDUSTRIAL - FOR LEASE

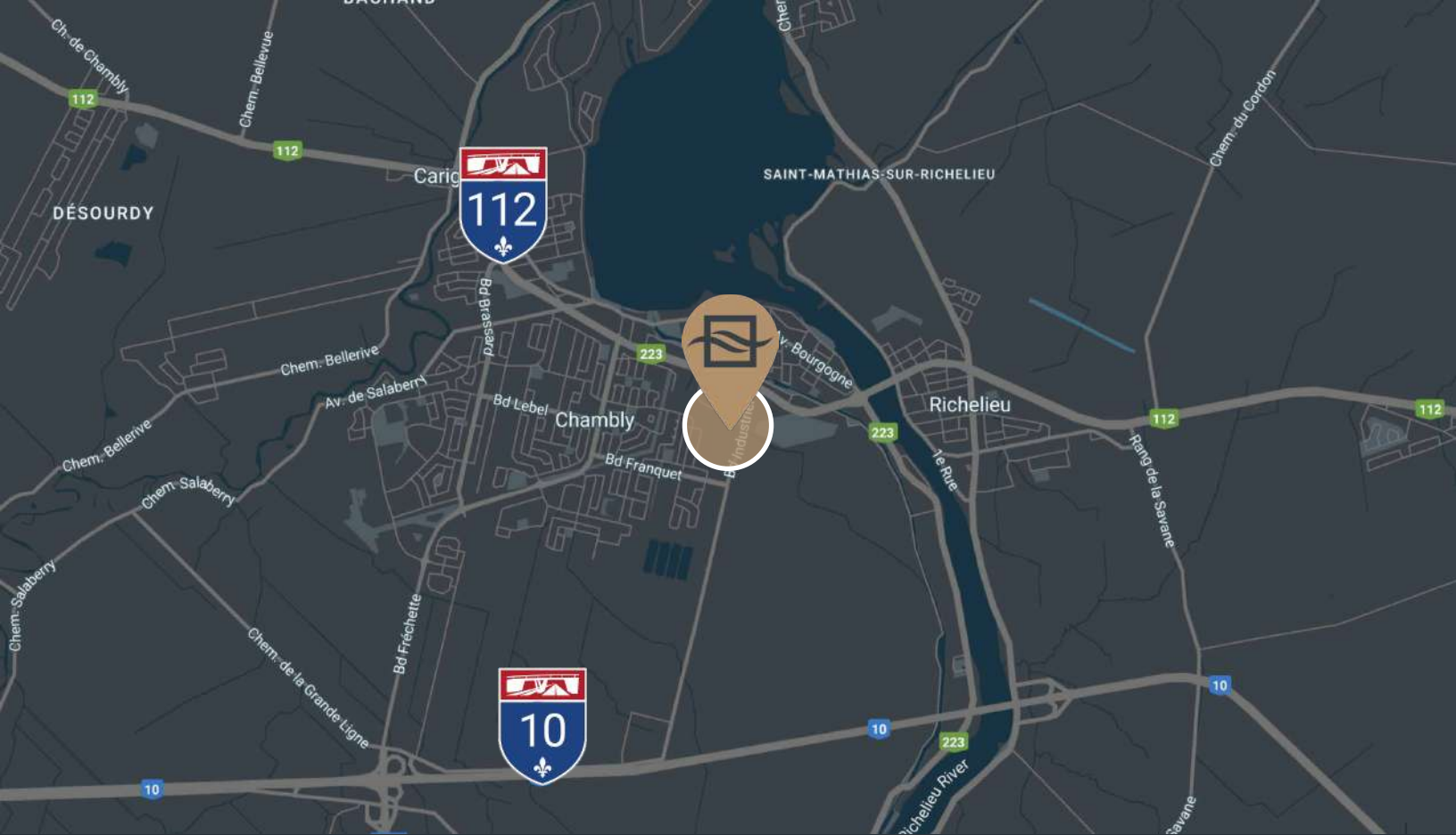
169 500 PI. CA. DISPONIBLE - 169 500 SQ. FT. AVAILABLE

- **Près de l'autoroute 10 et 112** | *Close to Highway 10 and 112*
- **6 quais de chargement** | *6 loading docks*
- **150 000 pi. ca. d'espace de rangement extérieur** | *150 000 sq. ft. of outdoor storage space*
- **14 portes au sol** | *14 drive-in doors*
- **Hauteur libre de 14', 20', 24'** | *Clear height of 14', 20', 24'*
- **Gicleurs ESFR** | *ESFR sprinklers*
- **50 places de stationnement** | *50 parking stalls*



BRASSWATER

245, avenue Victoria,
Suite 801
Westmount, Qc | H3Z 2M6
T: +1 514 535 4444
www.brasswater.ca



Zonage
Zoning

Industriel
Industrial

Surfaces disponibles (PI CA)
Available Areas (SF)

169 500

Portes au sol
Drive-in doors

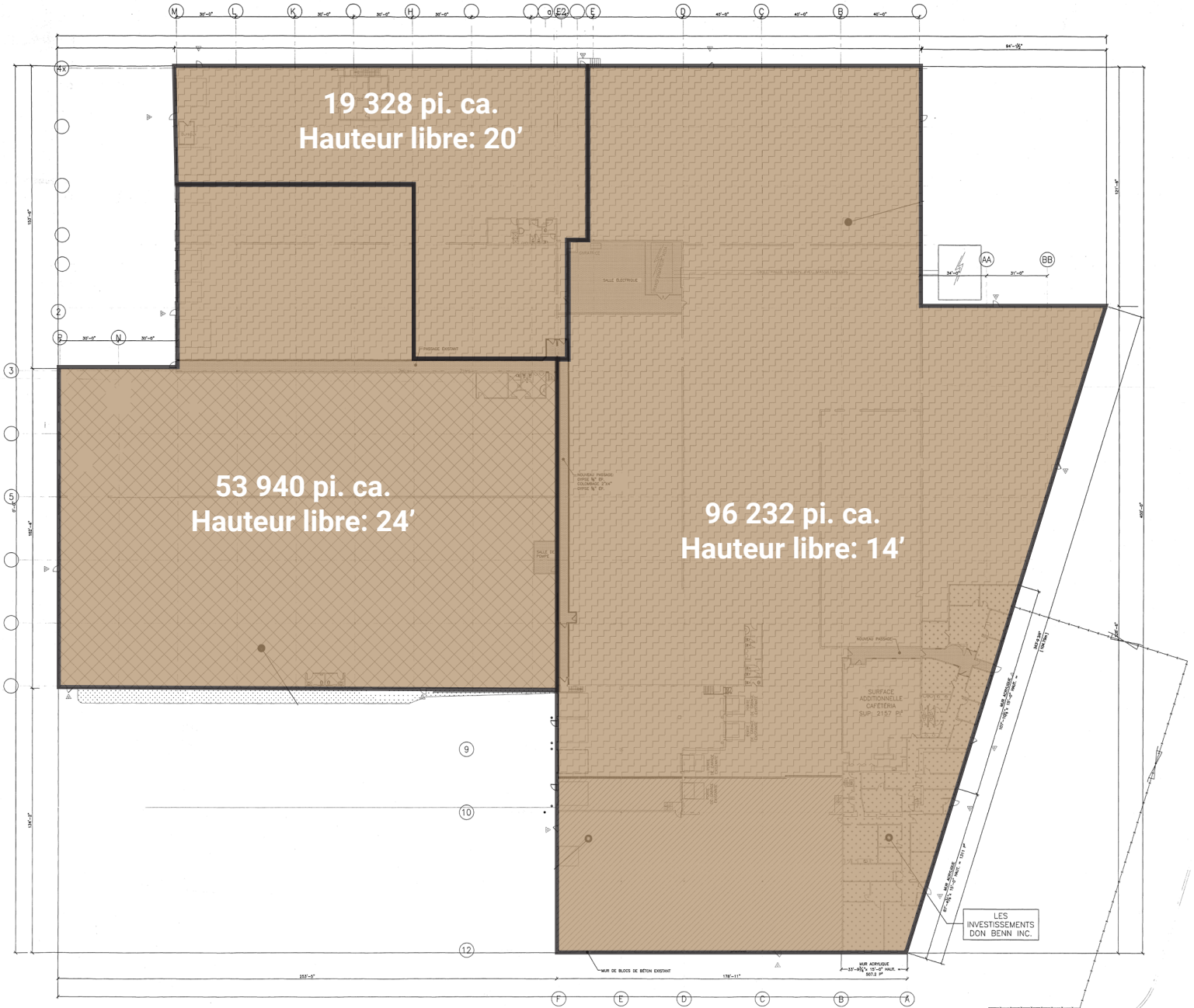
14

Quais de chargement
Loading docks

6

PLAN DU BÂTIMENT

169 500 pi. ca.



VUE DU TERRAIN

150 000 pi. ca.



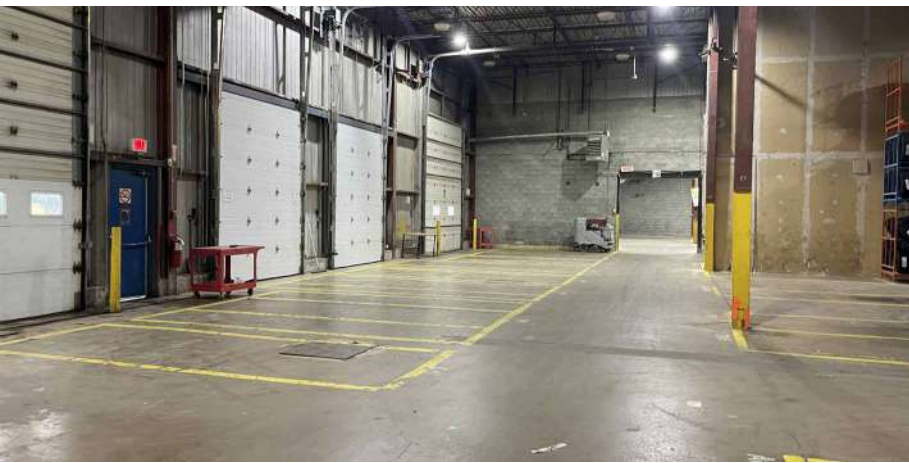
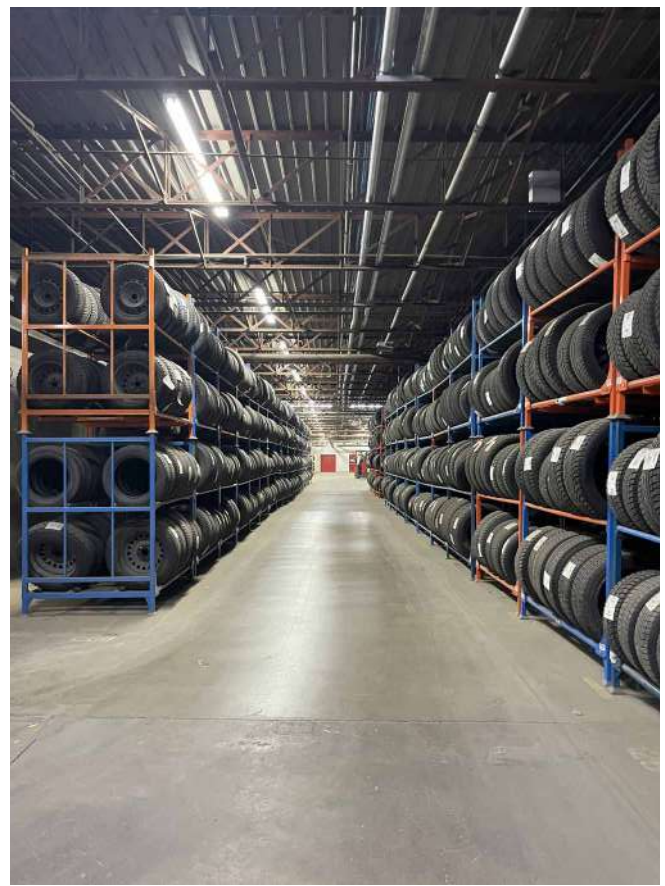
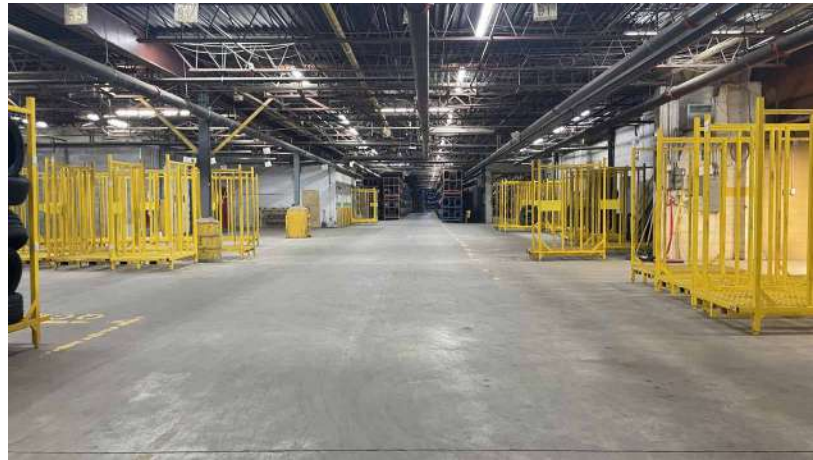
EMPLACEMENT STRATÉGIQUE POUR LIVRAISON ET EXPÉDITION RAPIDE

*STRATEGIC LOCATION FOR FAST DELIVERY AND
SHIPPING*



TERRAIN ADDITIONNEL DE 150 000 PI. CA. POUVANT ACCUEILLIR JUSQU'À 140 REMORQUES

*ADDITIONAL 150,000 FT. CA. CAN BE USED TO STORE
UP TO 140 TRAILERS*





CONTACTEZ-NOUS – CONTACT US

ÉQUIPE DE LOCATION LEASING TEAM

T: +1 514 535 4444
leasing@brasswater.ca

VICTORIA TENENBOYM

Directrice principale à la location
Senior leasing director

T: +1 514 894 6505
vtenenboym@brasswater.ca



BRASSWATER

245, avenue Victoria,
Suite 801
Westmount, Qc | H3Z 2M6
T: +1 514 535 4444
www.brasswater.ca