



1220 MICHELIN LAVAL, QUÉBEC

INDUSTRIEL - À LOUER
INDUSTRIAL - FOR LEASE

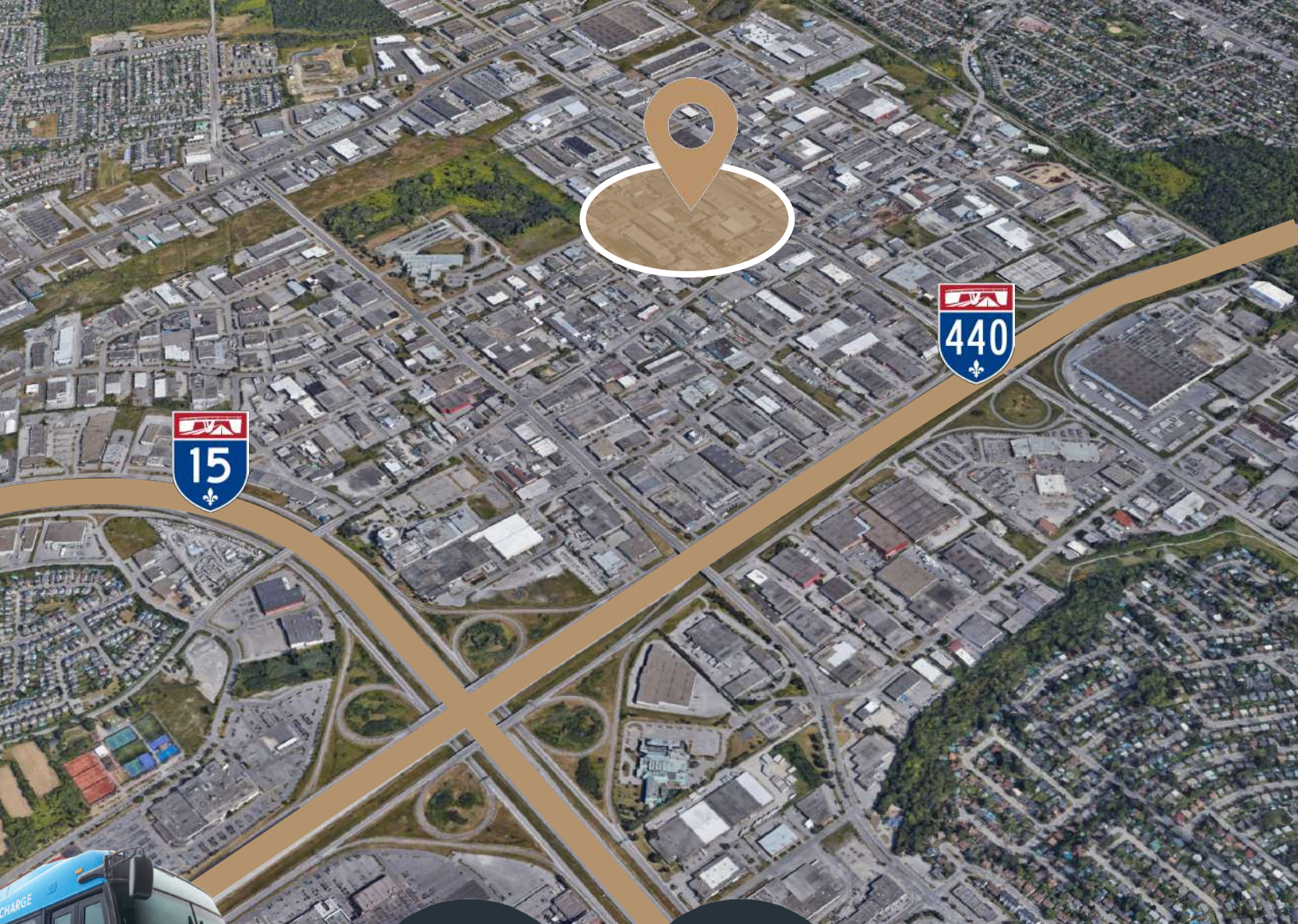
JUSQU'À 24,186 PI. CA. - UP TO 24,186 SQ. FT.

- Possibilité d'extension de 20,000 pi.ca. | *Possible expansion of 20,000 sq.ft.*
- 2 quais de chargement | *2 loading docks*
- 1 porte au sol avec quais de chargement couverts | *1 drive-in door*
- 18' de hauteur libre | *18' of clear height*
- 33 places de stationnement | *33 parking stalls*
- Situé proche d'autoroute 40 | *Located close to highway 40*



BRASSWATER

245, avenue Victoria,
Suite 801
Westmount, Qc | H3Z 2M6
T: +1 514 535 4444
www.brasswater.ca



TRAIN
GARE
VIMONT

BUS
70, 63,
76, 45

ACCÈS FACILE À L'AUTOROUTE  ET/AND  EASY HIGHWAY ACCESS

SERVICES ET COMMODITÉS | SERVICES AND AMENITIES

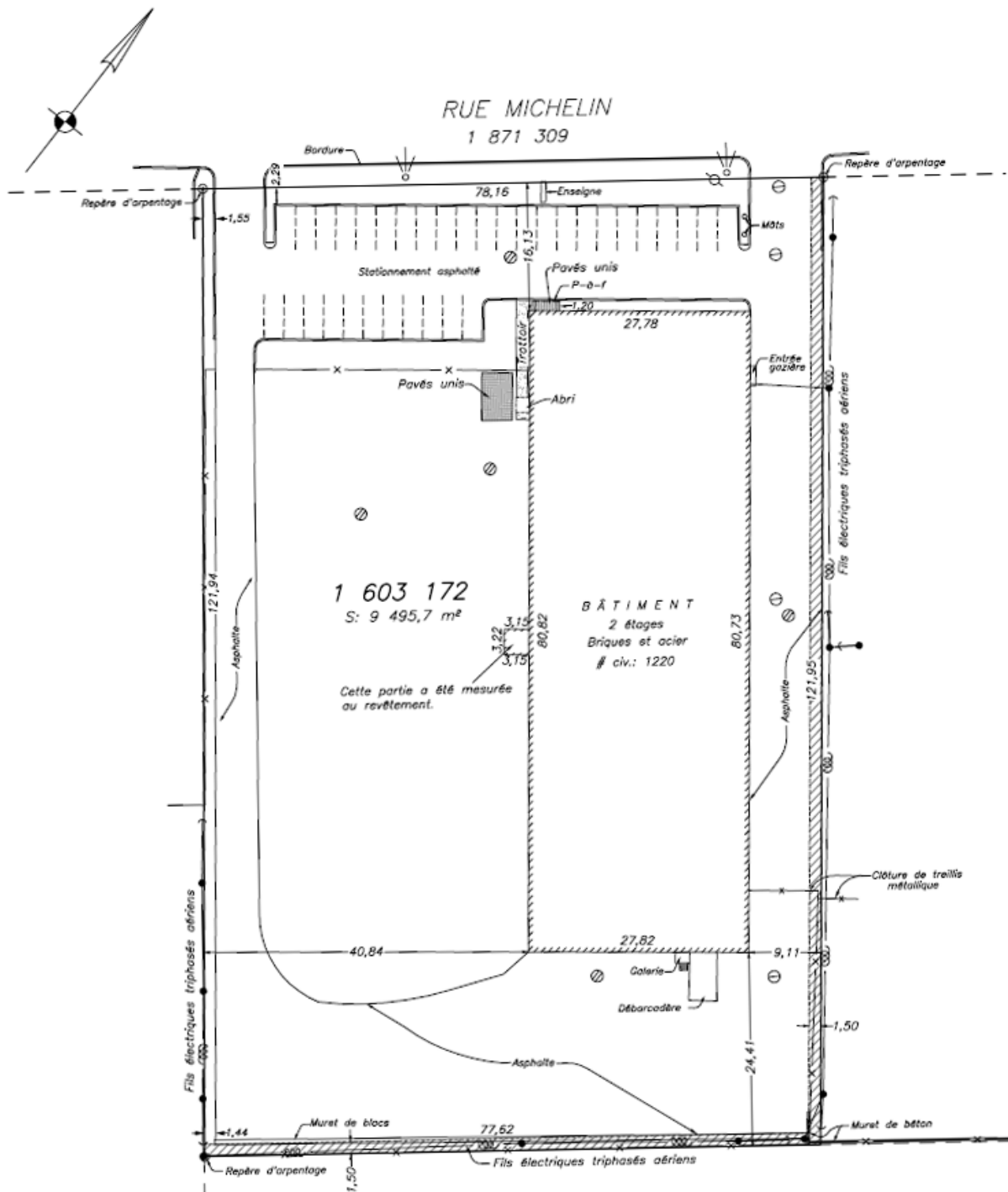
STATION ESSENCE | GAS STATION RESTAURANTS COMMERCE | SHOPS

- PETRO-CANADA
- PETRO-PASS TRUCK STOP
- SHELL
- ULTRAMAR

- VIMONT PIZZA
- BELLE PROVINCE
- LA STATION DES SPORTS
- TIM HORTONS

- COSTCO
- ST. VIAEUR
- IMMERSIA ESCAPE ROOMS
- JEU D'EVASION - ESCAPARIUM

PLAN DU BÂTIMENT - BUILDING PLAN





CONTACTEZ-NOUS | CONTACT US

ÉQUIPE DE LOCATION LEASING TEAM

T: +1 514 535 4444
leasing@brasswater.ca

JORDAN ALTMAN

Agent à la location
Leasing Agent

T: +1 514 775 1234
jaltman@brasswater.ca

JORDAN KATZ

Directeur principal, location
Senior Leasing Director

T: +1 514 713 KATZ (5289)
jkatz@brasswater.ca



BRASSWATER

245, avenue Victoria,
Suite 801
Westmount, Qc | H3Z 2M6

T: +1 514 535 4444
www.brasswater.ca