



491 BOUL. LEBEAU SAINT-LAURENT, QC

INDUSTRIEL - À LOUER
INDUSTRIAL - FOR LEASE

3 175 PI. CA. DISPONIBLE - 3 175 SQ. FT. AVAILABLE

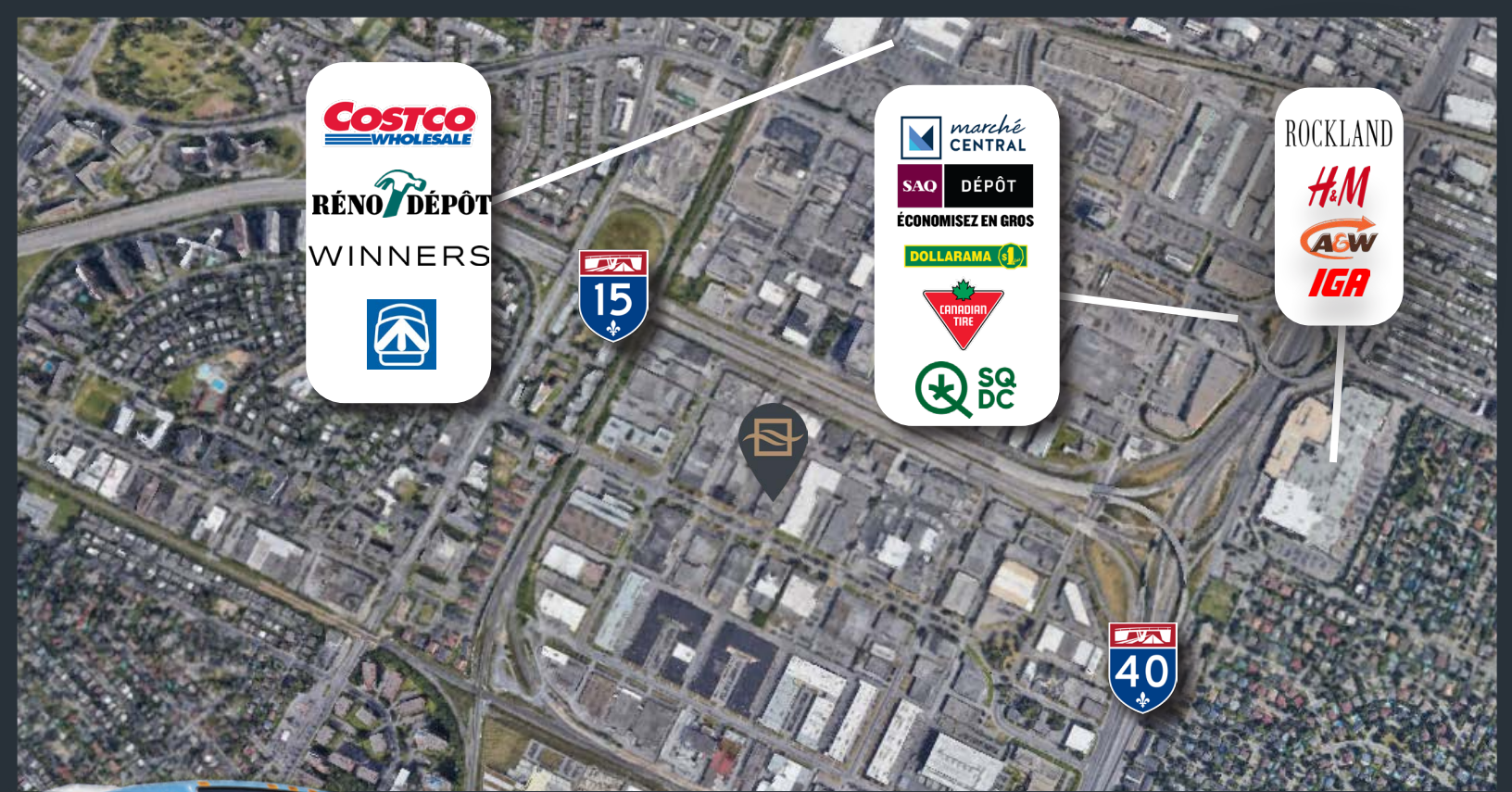
- **1 quais de chargement** | *1 loading docks*
- **18' de hauteur libre** | *18' of clear height*
- **Stationnement extérieur** | *Exterior parking*
- **Situé dans la zone industrielle de Saint-Laurent** | *Located in the industrial area of Saint-Laurent*
- **Situé proche des autoroutes 15 et 40** | *Located close to highways 15 and 40*



BRASSWATER


245, avenue Victoria,
Suite 801
Westmount, Qc | H3Z 2M6



T: +1 514 535 4444
www.brasswater.ca




 54
121

 Côte-Vertu

ÉDUCATION
 48,825

POPULATION
 98,828
 80,737

TRANSPORT

DÉMOGRAPHIQUE | DEMOGRAPHIC

ACCÈS FACILE À L'AUTOROUTE



ET/AND



EASY HIGHWAY ACCESS

SERVICES ET COMMODITÉS | SERVICES AND AMENITIES

BANQUES | BANKS

BANQUE NATIONALE
RBC
HSBC
BMO

RESTAURANTS

EGGSPECTION
SHISH-KEBAB
SAHTEIN
BACARO
A&W
NOSTOS
GRILLADES TORINO

COMMERCE | SHOPS

PLAZA L'ACADIE
MARCHÉ CENTRAL
CENTRE ROCKLAND
ZARA
H&M
IGA
PLACE VERTU

HOTELS

HILTON
RUBY
DAYS INN
RADISON



APPERÇU | OVERVIEW

ZONAGE / ZONE

INDUSTRIEL / INDUSTRIAL

**SURFACE DISPONIBLE /
AREA AVAILABLE**

ENTREPÔT / WAREHOUSE: 3 175 PI²/F²

POPULATION

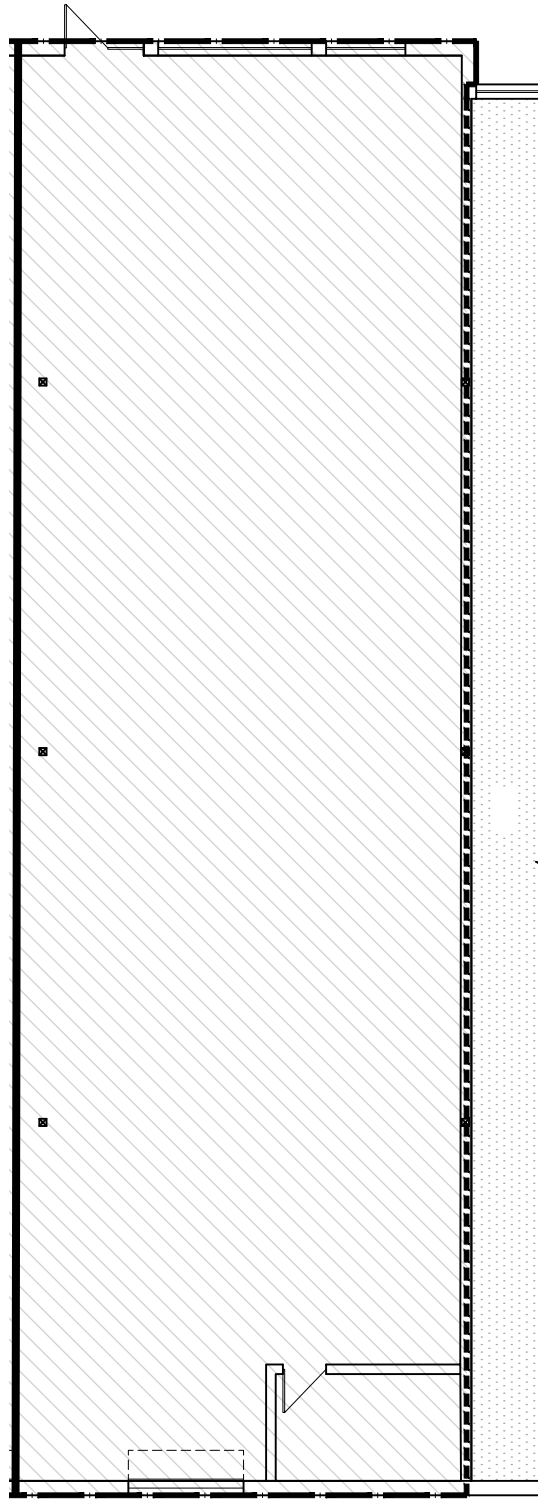
98 828

**POPULATION DIPLÔMÉE DE
L'UNIVERSITÉ / POPULATION WITH
UNIVERSITY DEGREES**

48 825

**REVENU DU MÉNAGE /
HOUSEHOLD INCOME**

\$ 80,737



ENTREPÔT / WAREHOUSE

3 175 pc/sf





CONTACTEZ-NOUS | CONTACT US

VICTORIA TENENBOYM

Directrice principale à la location
Senior leasing director

T: +1 514 894 6505
vtenenboym@brasswater.ca

JORDAN ALTMAN

Agent à la location
Leasing Agent

T: +1 514 775 1234
jaltman@brasswater.ca

ÉQUIPE DE LOCATION LEASING TEAM

T: +1 514 535 4444
leasing@brasswater.ca



BRASSWATER

245, avenue Victoria,
Suite 801
Westmount, Qc | H3Z 2M6

T: +1 514 535 4444
www.brasswater.ca