

Espaces allant de 2 500 pi²
jusqu'à 3 500 pi²

Spaces ranging from 2,500 ft²
to 3,500 ft²

BRASSWATER INDUSTRIAL CAMPUS LASALLE

INDUSTRIEL - À LOUER
INDUSTRIAL - FOR LEASE

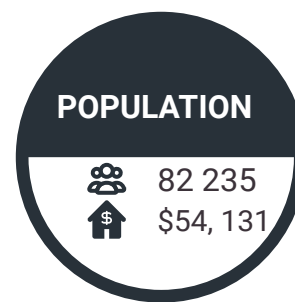
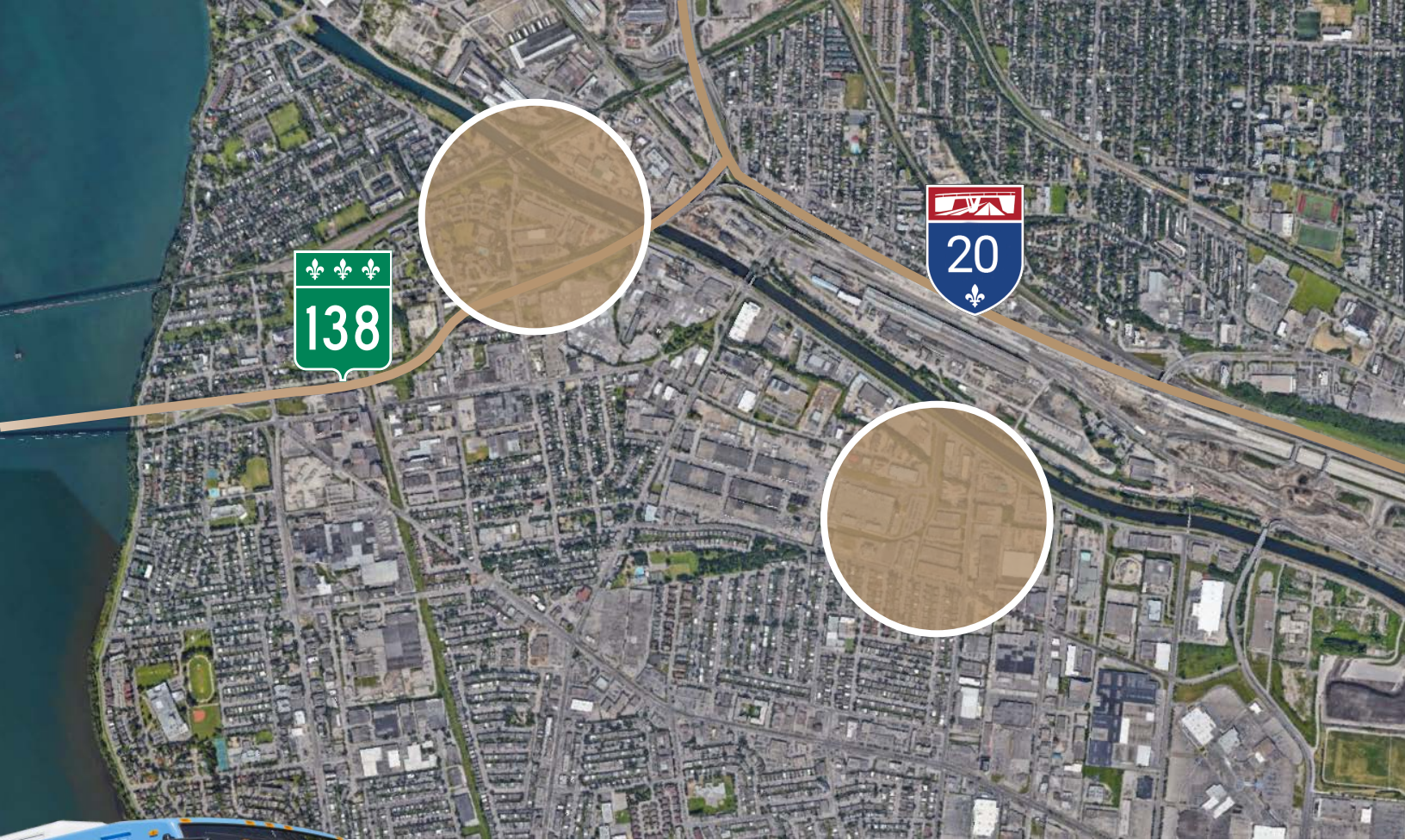
De 2 500 PI. CA. à 3 500 PI. CA. | From 2 500 SQ. FT. to 3 500 SQ. FT.

- **Accès facile vers Montréal et la rive-Sud** | *Easy acces to Montréal and the south-Shore*
- **À quelques minutes du pont Mercier** | *A few minutes from the Mercier Bridge*
- **Près de l'autoroute 20 et route 138** | *Near highway 20 and route 138*
- **Transport en commun accessible** | *Easy acces to public transport*
- **Porte de camion de 18' de hauteur libre sur chaque propriété** | *18' clear height truck door on each property*



BRASSWATER

245, avenue Victoria,
Suite 801
Westmount, Qc | H3Z 2M6
T: +1 514 535 4444
www.brasswater.ca



TRANSPORT

ACCÈS FACILE À L'AUTOROUTE  ET/AND  EASY HIGHWAY ACCESS

SERVICES ET COMMODITÉS | SERVICES AND AMENITIES

BANQUES | BANKS

RBC
BMO
SCOTIA BANK
BANQUE LORENTIENNE
BANQUE NATIONAL

RESTAURANTS

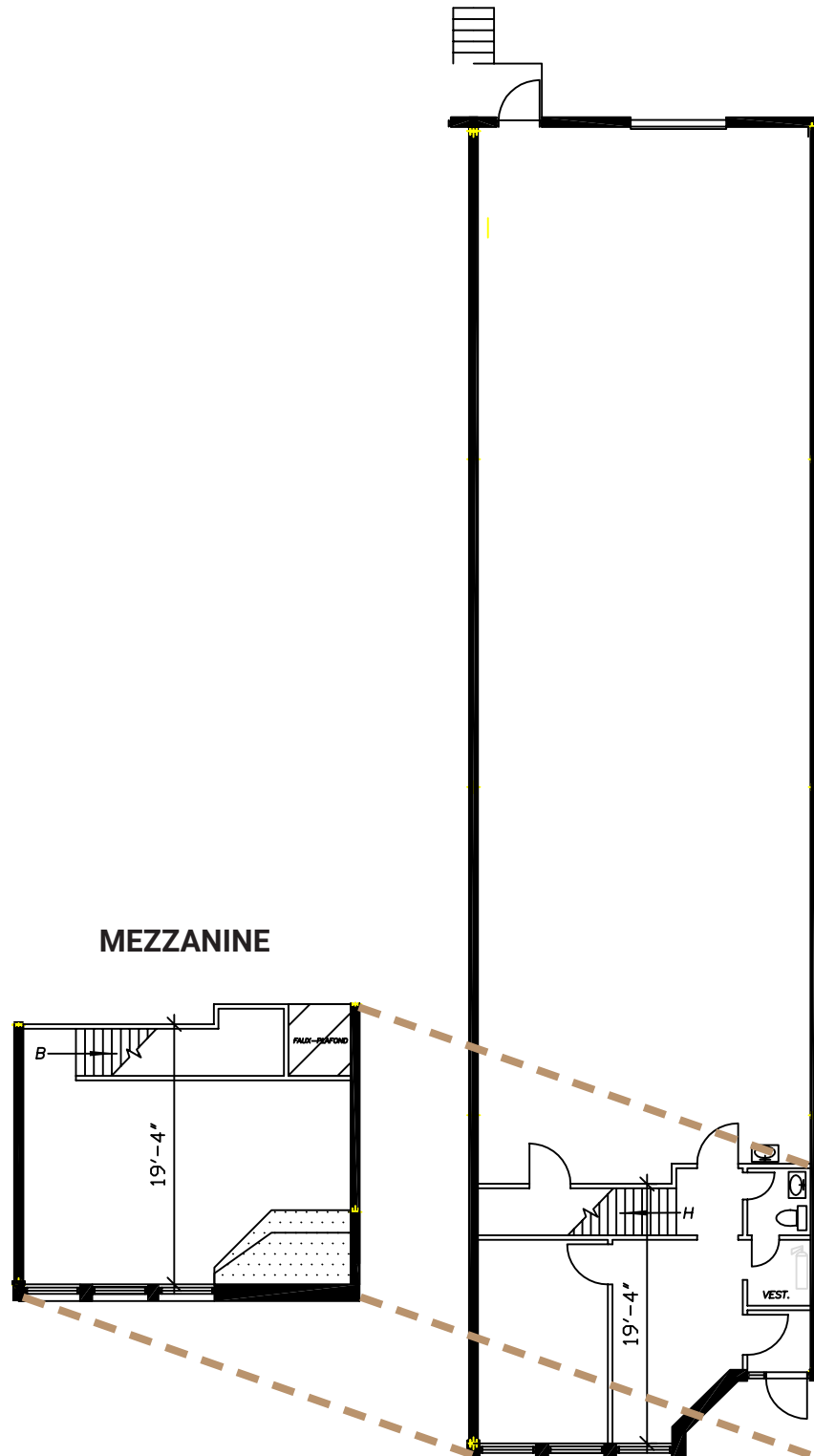
A&W
ST-HUBERT
ALLÔ MON COCO
LA BELLE ET LA BOEUF
BOCCI
TIM HORTON'S
LA BELLE PROVINCE
LA MAISON DE SEOUL

COMMERCE | SHOPS

CENTRE D'ACHAT ANGRIGNON
TIGRE GÉANT
WINNERS
MONDOU
DOLLARAMA
BEST BUY
RENAUD-BRAY
HUDSON'S BAY
WALMART
CANADIAN TIRE

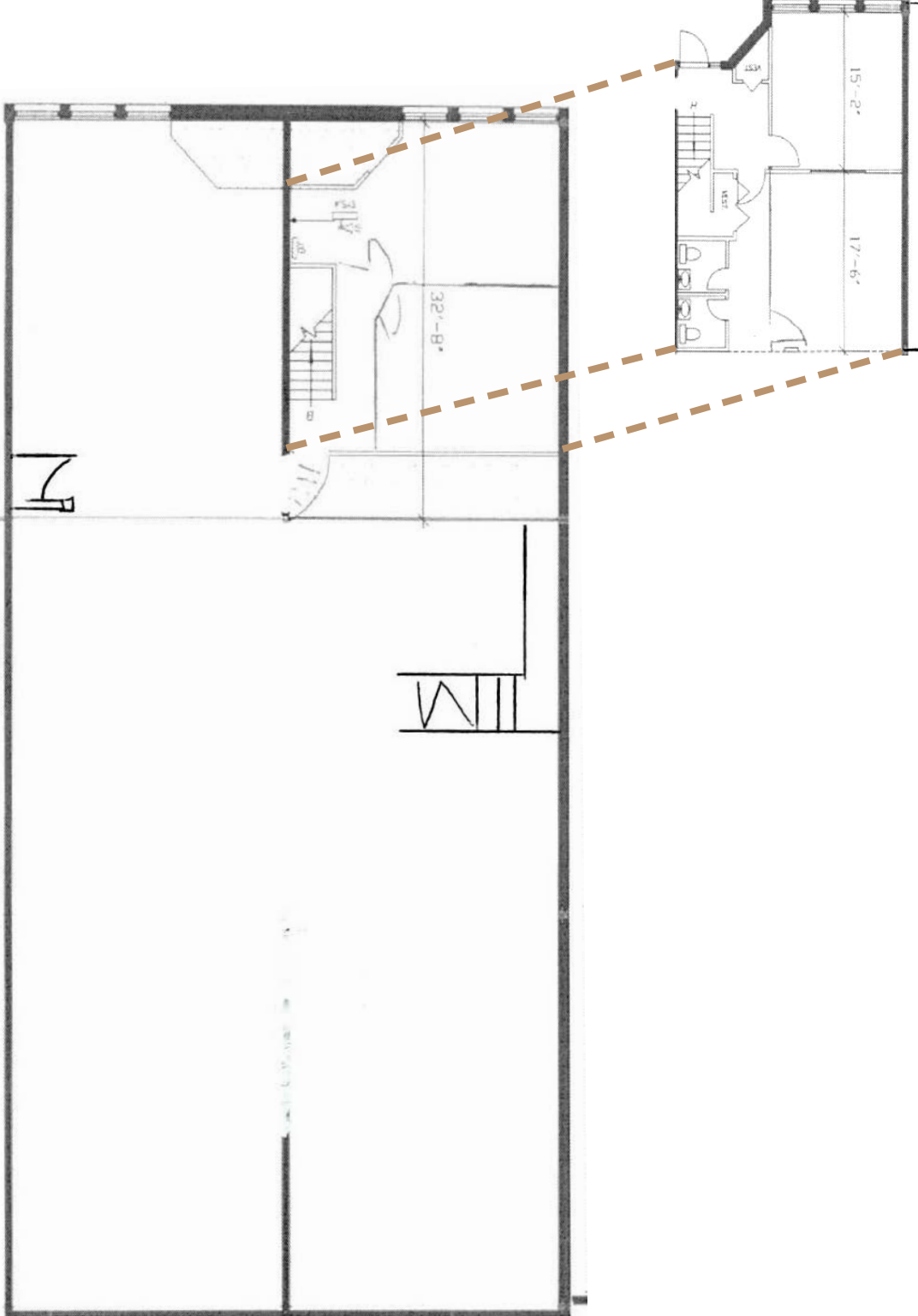
DISPOSITION TYPIQUE TYPICAL LAYOUT

SCÉNARIO #1



SCÉNARIO #2

MEZZANINE





CONTACTEZ-NOUS – CONTACT US

VICTORIA TENENBOYM

Directrice principale à la location
Senior leasing director

T: +1 514 894 6505
vtenenboym@brasswater.ca

PIERRE PAQUETTE

Directeur à la location et opérations
Director of leasing and operations

T: +1 514 570 2557
ppaquette@brasswater.ca

ÉQUIPE DE LOCATION LEASING TEAM

T: +1 514 535 4444
leasing@brasswater.ca



BRASSWATER

245, avenue Victoria,
Suite 801
Westmount, Qc | H3Z 2M6
T: +1 514 535 4444
www.brasswater.ca