

Espaces allant de 2 500 pi²
jusqu'à 30 000 pi²

Spaces ranging from 2,500 ft²
to 30,000 ft²



BRASSWATER INDUSTRIAL CAMPUS SAINT-LAURENT

INDUSTRIEL - À LOUER
INDUSTRIAL - FOR LEASE

De 2 500 PI. CA. à 30 000 PI. CA. | From 2 500 SQ. FT. to 30 000 SQ. FT.

- **Au coeur du quartier industriel** | *In the heart of the industrial district*
- **Près de 3 autoroutes principales** | *Near 3 major highways*
- **Transport en commun accessible** | *Easy acces to public transport*
- **Près du centre commercial Place Vertu** | *Next to the Place Vertu mall*
- **Porte de camion de 18' de hauteur libre sur chaque propriété** | *18' clear height truck door on each property*





BRASSWATER

245, avenue Victoria,
Suite 801
Westmount, Qc | H3Z 2M6
T: +1 514 535 4444
www.brasswater.ca



 177,196


ÉDUCATION
 27 320
 BAC

ÉDUCATION
 178 750
 \$79, 423

TRANSPORT

ACCÈS FACILE À L'AUTORO  ,  ET/AND  EASY HIGHWAY ACCESS

SERVICES ET COMMODITÉS | SERVICES AND AMENITIES

BANQUES | BANKS

DESJARDINS
CIBC
TD CANADA TRUST
SCOTIA BANK

RESTAURANTS

STARBUCKS
SUBWAY
LA CAGE
MCDONALD'S
NOTRE BOEUF-DE-GRÂCE
TIM HORTON'S
SUSHI SHOP

COMMERCE | SHOPS

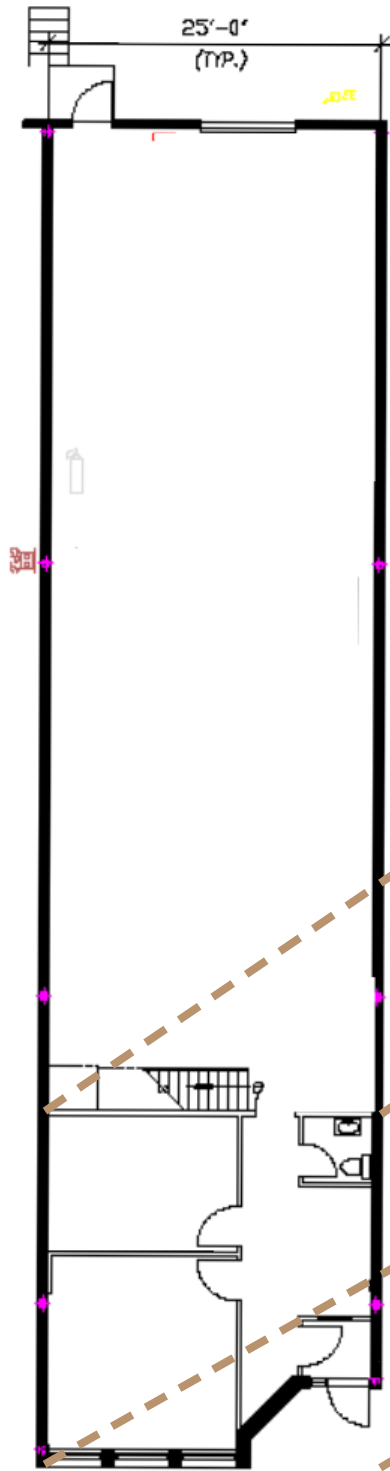
CANADIAN TIRE
SPORTS EXPERTS
PLACE VERTU
ADONIS
DOLLARAMA
JOE FRESH
URBAN PLANET
IKEA
WALMART
DOLLARAMA

HOTELS

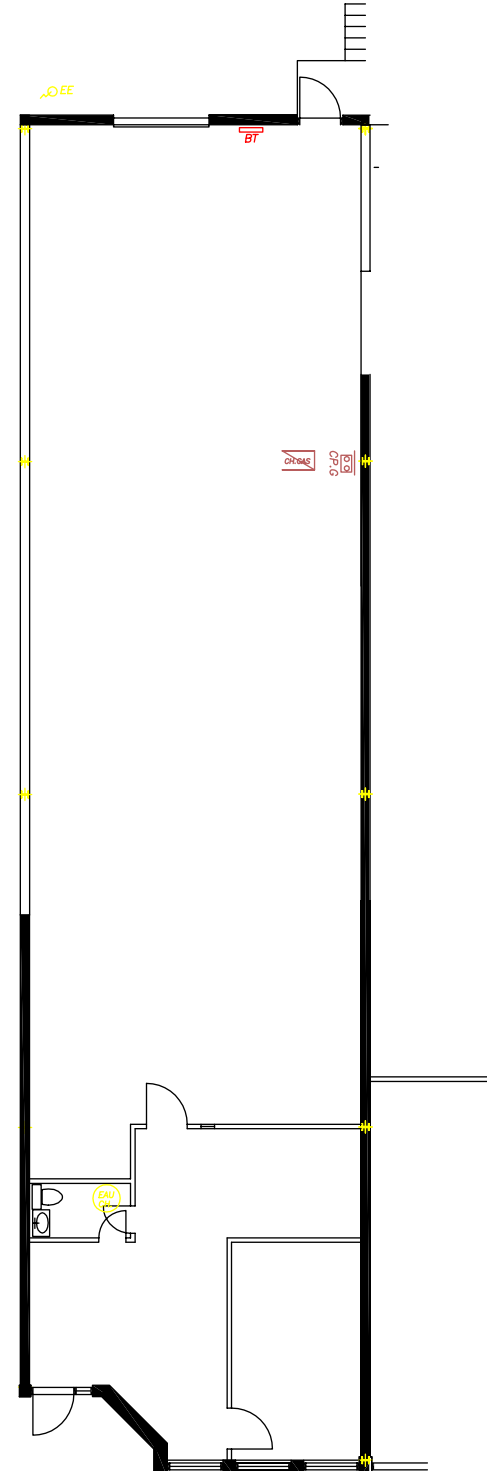
MARIOTT
BEST WESTERN
HILTON GARDEN

DISPOSITION TYPIQUE TYPICAL LAYOUT

SCÉNARIO #1



SCÉNARIO #2



SCÉNARIO #3

28 380 pi. ca.

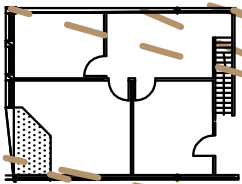
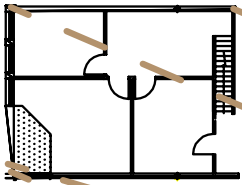
2469 Guénette | 3 380 pi. ca.

2465 Guénette | 2 500 pi. ca.

2463 Guénette | 2 500 pi. ca.

2461 Guénette | 2 500 pi. ca.

2459 Guénette | 2 500 pi. ca.



2457 Guénette | 2 500 pi. ca.

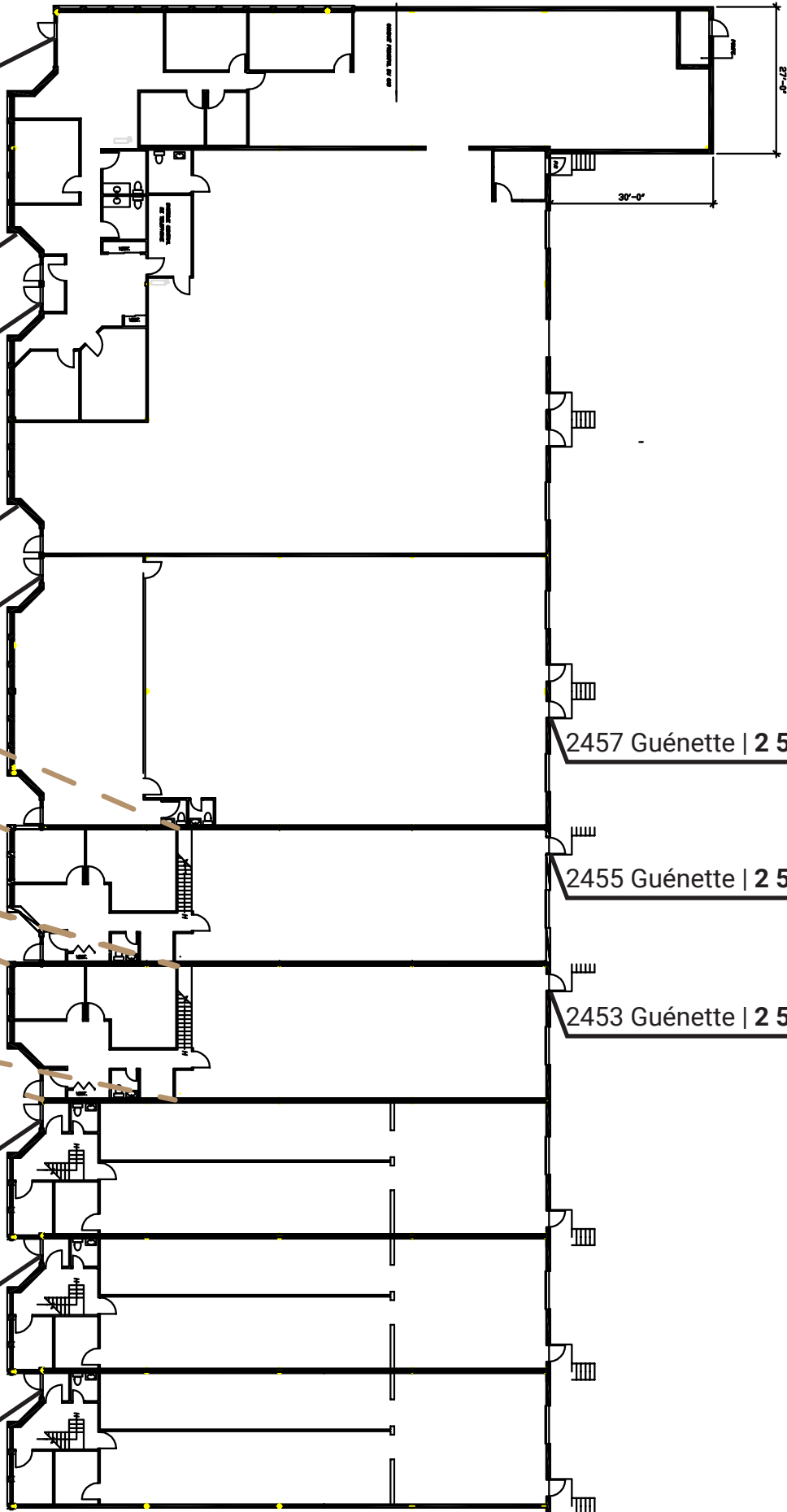
2455 Guénette | 2 500 pi. ca.

2453 Guénette | 2 500 pi. ca.

2451 Guénette | 2 500 pi. ca.

2449 Guénette | 2 500 pi. ca.

2447 Guénette | 2 500 pi. ca.





CONTACTEZ-NOUS – CONTACT US

VICTORIA TENENBOYM

Directrice principale à la location
Senior leasing director

T: +1 514 894 6505
vtenenboym@brasswater.ca

PIERRE PAQUETTE

Directeur à la location et opérations
Director of leasing and operations

T: +1 514 570 2557
ppaquette@brasswater.ca

ÉQUIPE DE LOCATION LEASING TEAM

T: +1 514 535 4444
leasing@brasswater.ca



BRASSWATER

245, avenue Victoria,
Suite 801
Westmount, Qc | H3Z 2M6

T: +1 514 535 4444
www.brasswater.ca