

FORMER ART VAN HQ/WAREHOUSE – FOR LEASE



6500 FOURTEEN MILE ROAD | WARREN, MI

PROPERTY FEATURES

- 1,056,890 available square feet for lease
 - 39,575 sq. ft. freestanding single story office building
 - 47,050 sq. ft. corporate offices
 - 53,605 sq. ft. of 100' high rise automated warehouse
- 38' – 100' clear height
- (12) grade level doors, (212) truckwells
- Situated on 63 acres
- 1152 parking spaces
- Zoned M-2, Light Industrial
- Very clean distribution center!
- Can divide from 140,000 sq. ft. and up!
- Lease Rate: \$5.75/sq.ft. NNN



BRASSWATER

For more information, please contact:

JOE HAMWAY
(248) 948 0113

jhamway@signatureassociates.com

GREG HUDAS
(248) 799 3162

ghudas@signatureassociates.com



SIGNATURE ASSOCIATES
KNOW SIGNATURE | KNOW RESULTS

6500 Fourteen Mile Road – Warren, MI

Former Art Van HQ/Warehouse - For Lease

1,056,890
Square Feet
AVAILABLE



For more information, please contact:

JOE HAMWAY
(248) 948 0113

jhamway@signatureassociates.com

GREG HUDAS
(248) 799 3162

ghudas@signatureassociates.com

SIGNATURE ASSOCIATES
One Towne Square, Suite 1200
Southfield, MI 48076
www.signatureassociates.com

6500 Fourteen Mile Road – Warren, MI

Former Art Van HQ/Warehouse - For Lease

1,056,890
Square Feet
AVAILABLE



For more information, please contact:

JOE HAMWAY
(248) 948 0113

jhamway@signatureassociates.com

GREG HUDAS
(248) 799 3162

ghudas@signatureassociates.com

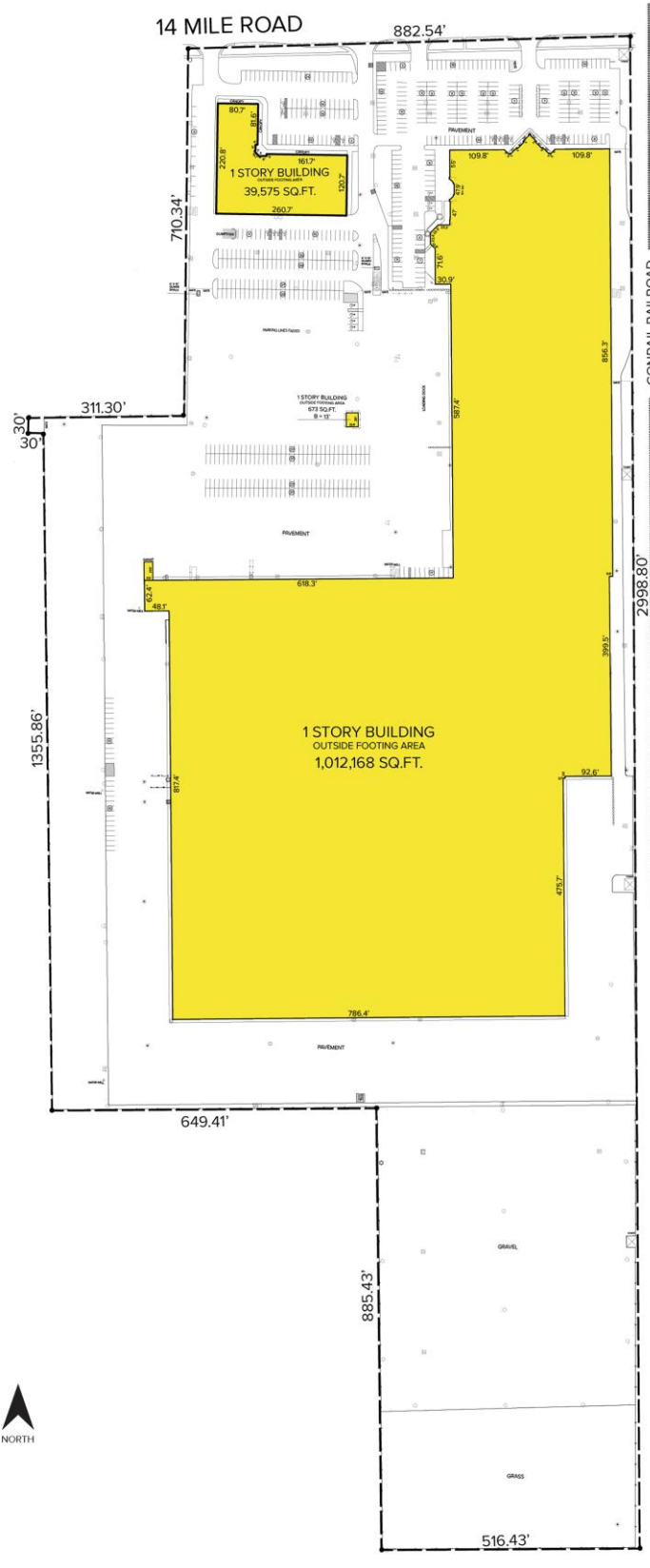
SIGNATURE ASSOCIATES
One Towne Square, Suite 1200
Southfield, MI 48076
www.signatureassociates.com

6500 Fourteen Mile Road – Warren, MI

Former Art Van HQ/Warehouse - For Lease

1,056,890
Square Feet
AVAILABLE

Site Plan



For more information, please contact:

JOE HAMWAY
(248) 948 0113

jhamway@signatureassociates.com

GREG HUDAS
(248) 799 3162

ghudas@signatureassociates.com

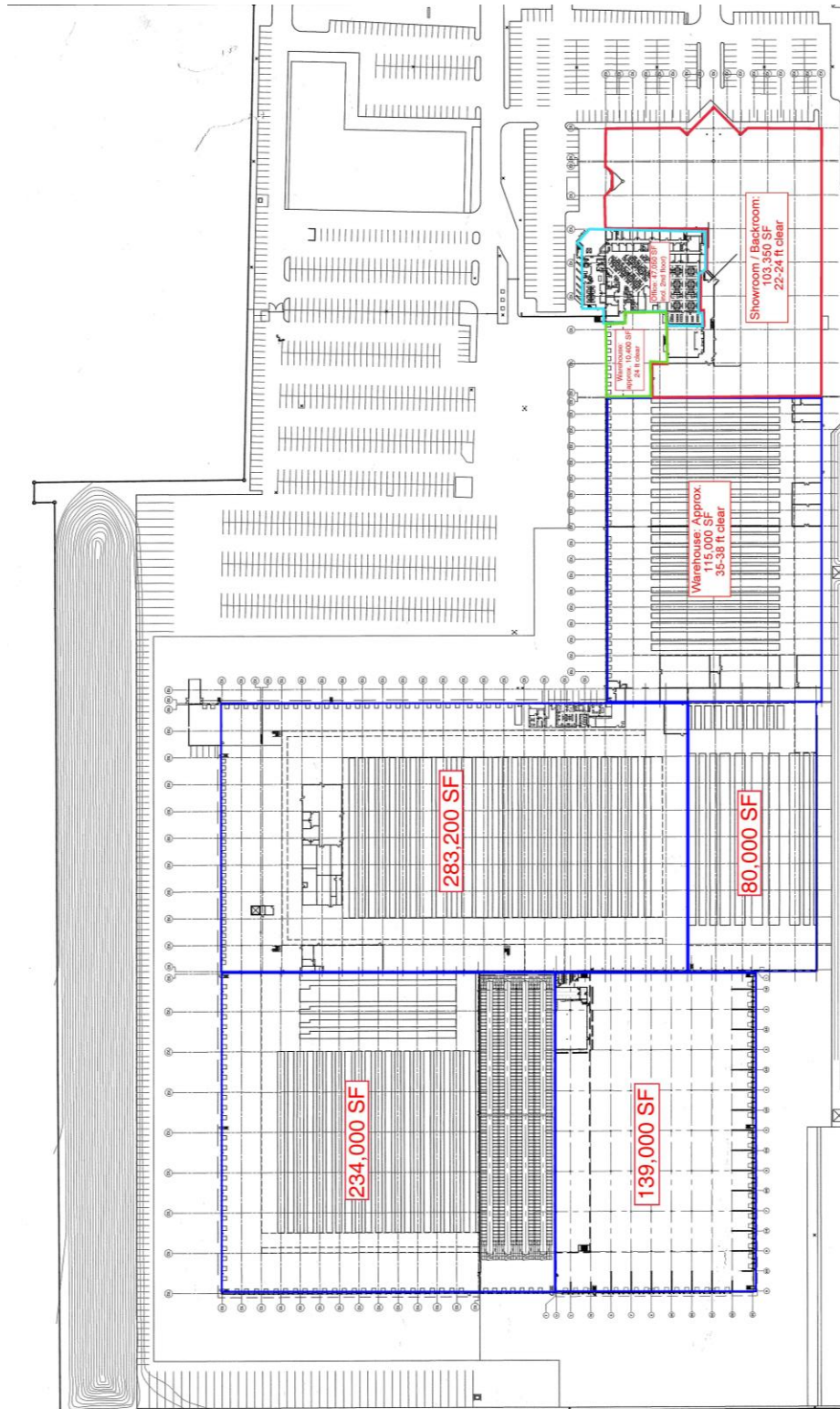
SIGNATURE ASSOCIATES
One Towne Square, Suite 1200
Southfield, MI 48076
www.signatureassociates.com

6500 Fourteen Mile Road – Warren, MI

Former Art Van HQ/Warehouse - For Lease

1,056,890
Square Feet
AVAILABLE

Floor Plan



For more information, please contact:

JOE HAMWAY
(248) 948 0113

jhamway@signatureassociates.com

GREG HUDAS
(248) 799 3162

ghudas@signatureassociates.com

SIGNATURE ASSOCIATES
One Towne Square, Suite 1200
Southfield, MI 48076
www.signatureassociates.com