



491 BOUL. LEBEAU SAINT-LAURENT, QC

INDUSTRIEL - À LOUER
INDUSTRIAL - FOR LEASE

4 106 PI. CA. DISPONIBLE - 4 106 SQ. FT. AVAILABLE

- **1 quais de chargement | 1 loading docks**
- **18' de hauteur libre | 18' of clear height**
- **Large stationnement extérieur | Large exterior parking**
- **Situé dans la zone industrielle de Saint-Laurent | Located in the industrial area of Saint-Laurent**
- **Situé proche des autoroutes 15 et 40 | Located close to highways 15 and 40**



BRASSWATER

245, avenue Victoria,
Suite 801
Westmount, Qc | H3Z 2M6
T: +1 514 535 4444
www.brasswater.ca



54
121

Côte-Vertu

EDUCATION

48,825

POPULATION

98,828
80,737

TRANSPORT

DÉMOGRAPHIQUE | DEMOGRAPHIC

ACCÈS FACILE À L'AUTOROUTE



ET/AND



EASY HIGHWAY ACCESS

SERVICES ET COMMODITÉS | SERVICES AND AMENITIES

BANQUES | BANKS

- BANQUE NATIONALE
- RBC
- HSBC
- BMO

RESTAURANTS

- EGGSPECTION
- SHISH-KEBAB
- SAHTEIN
- BACARO
- A&W
- NOSTOS
- GRILLADES TORINO

COMMERCE | SHOPS

- PLAZA L'ACADIE
- MARCHÉ CENTRAL
- CENTRE ROCKLAND
- ZARA
- H&M
- IGA
- PLACE VERTU

HOTELS

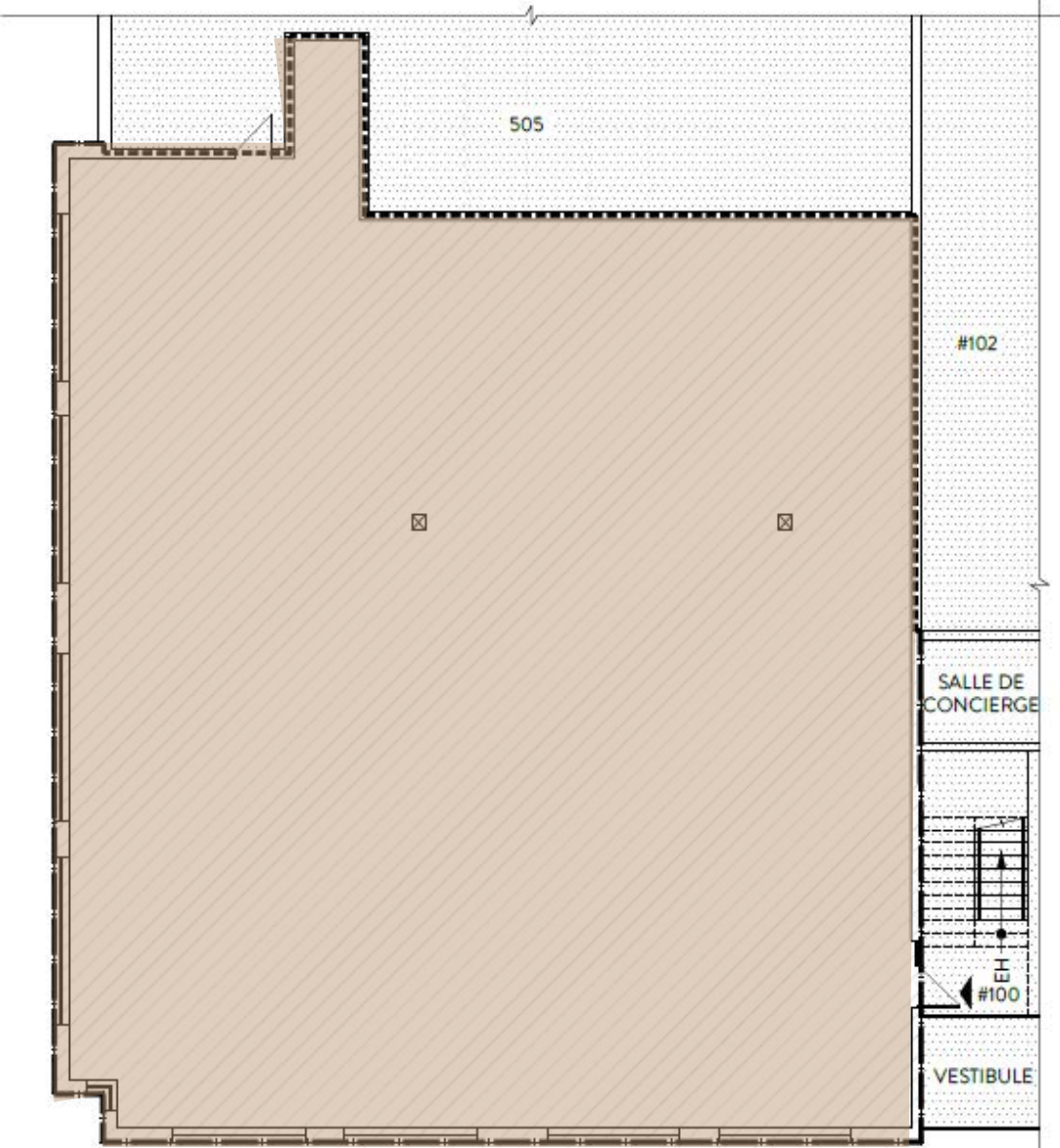
- HILTON
- RUBY
- DAYS INN
- RADISON



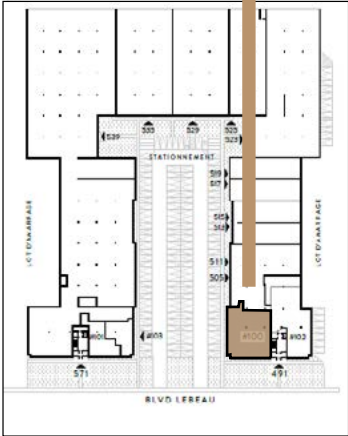
APPERÇU | OVERVIEW

Zonage / Zoning	Bureau / Office
Surface disponible Available space	4 106
Population	98 828
population diplômée de l'université Population with university degrees	48 825
Revenu du ménage Household income	\$ 80 737

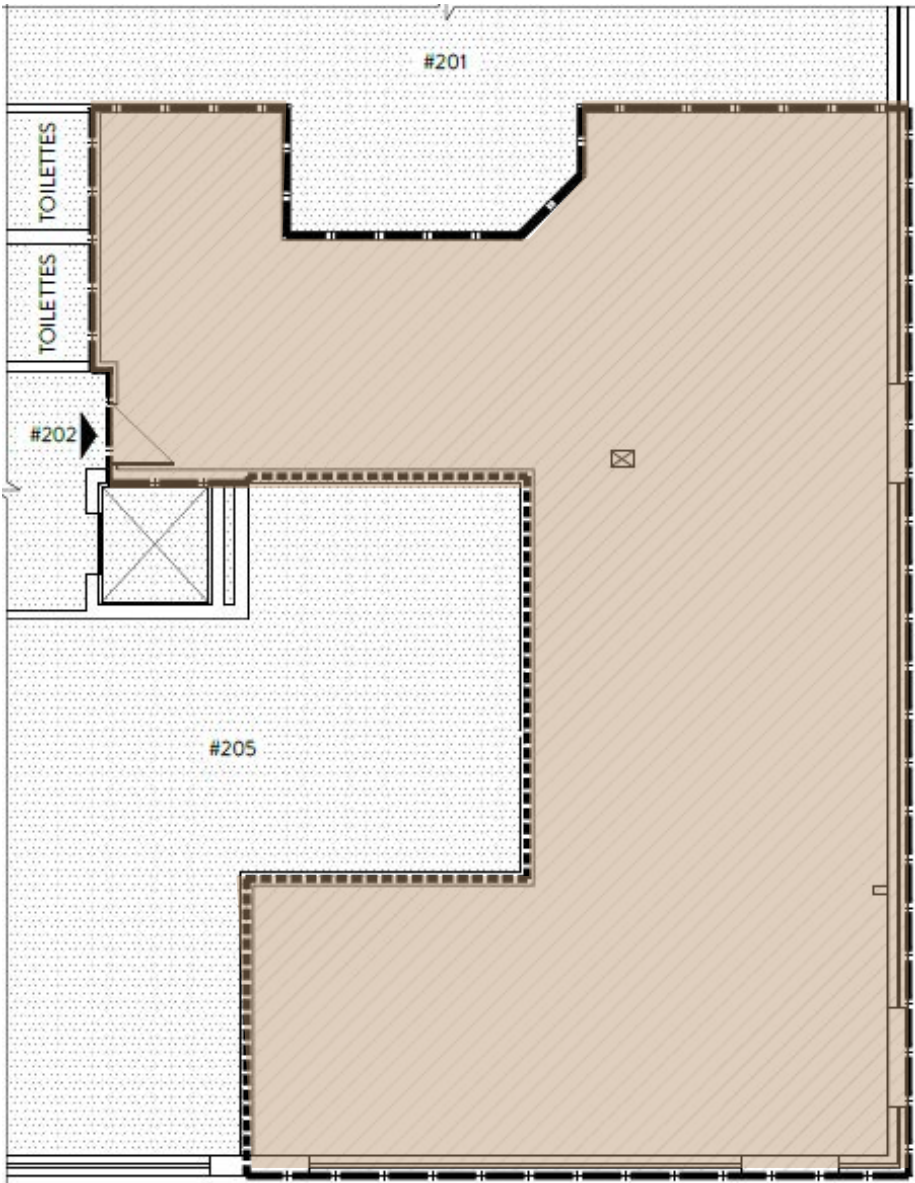
LES PLANS



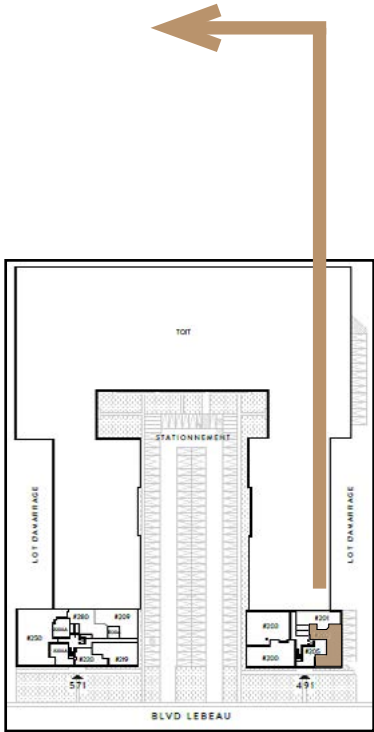
100 4 106 pc/sf



LES PLANS



202 1 513 pc/sf





CONTACTEZ-NOUS | CONTACT US

JORDAN ALTMAN

Agent à la location
Leasing Agent

T: +1 514 775 1234
jaltman@brasswater.ca

VICTORIA TENENBOYM

Directrice principale à la location
Senior leasing director

T: +1 514 894 6505
vtenenboym@brasswater.ca

ÉQUIPE DE LOCATION LEASING TEAM

T: +1 514 535 4444
leasing@brasswater.ca



BRASSWATER

245, avenue Victoria,
Suite 801
Westmount, Qc | H3Z 2M6

T: +1 514 535 4444
www.brasswater.ca