



CENTRE RÉGIONAL CHÂTEAUGUAY CHÂTEAUGUAY, QUÉBEC

COMMERCIAL - À LOUER
RETAIL - FOR LEASE

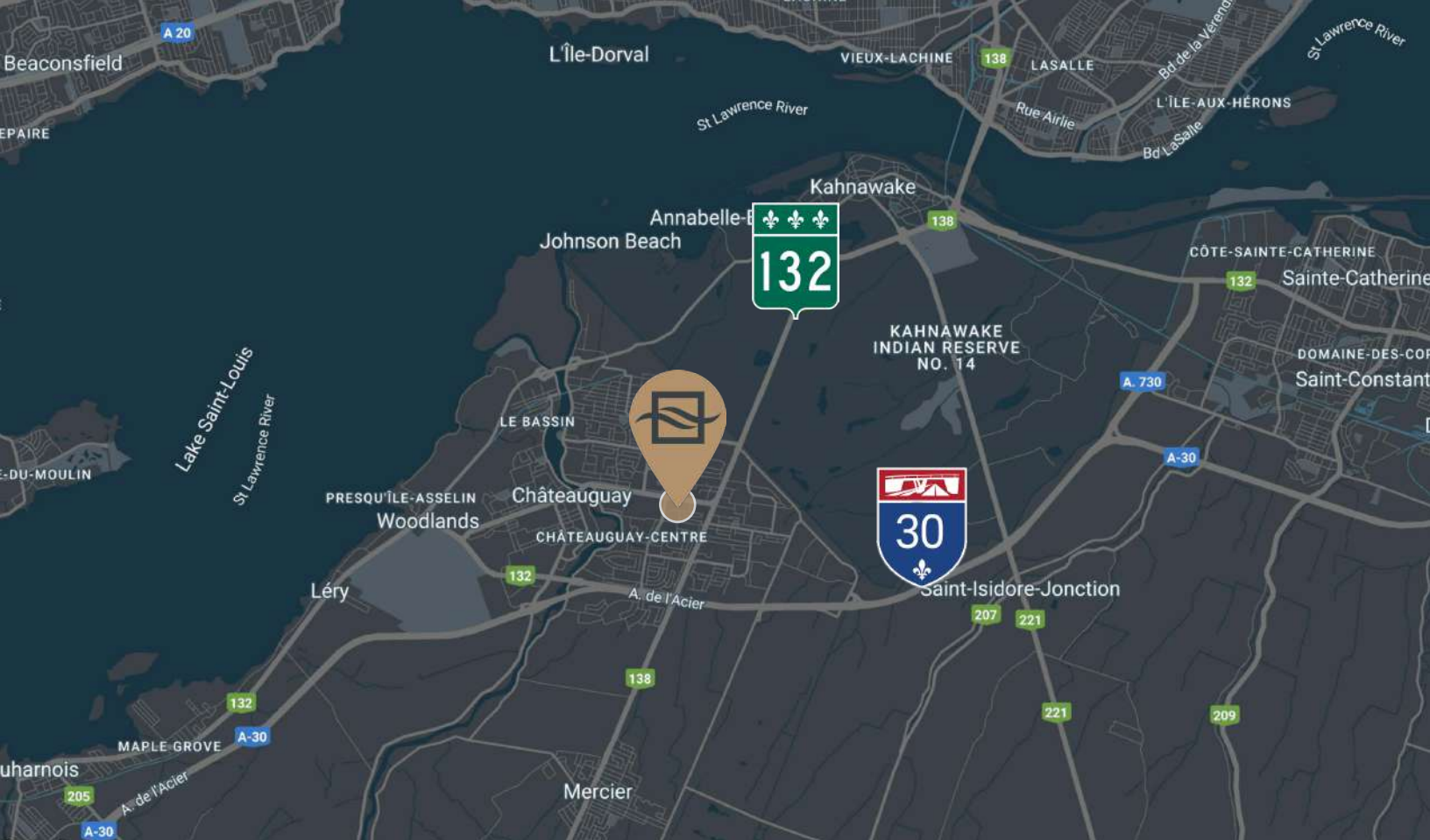
JUSQU'À 20 000 PI. CA. | UP TO 20 000 SQ. FT.

- **Situé au coeur de Châteauguay** | *Located in the heart of Châteauguay*
- **À quelques minutes de l'autoroute 30** | *Minutes from Highway 30*
- **Seul centre commercial fermés de la région** | *Only enclosed shopping center in the region*

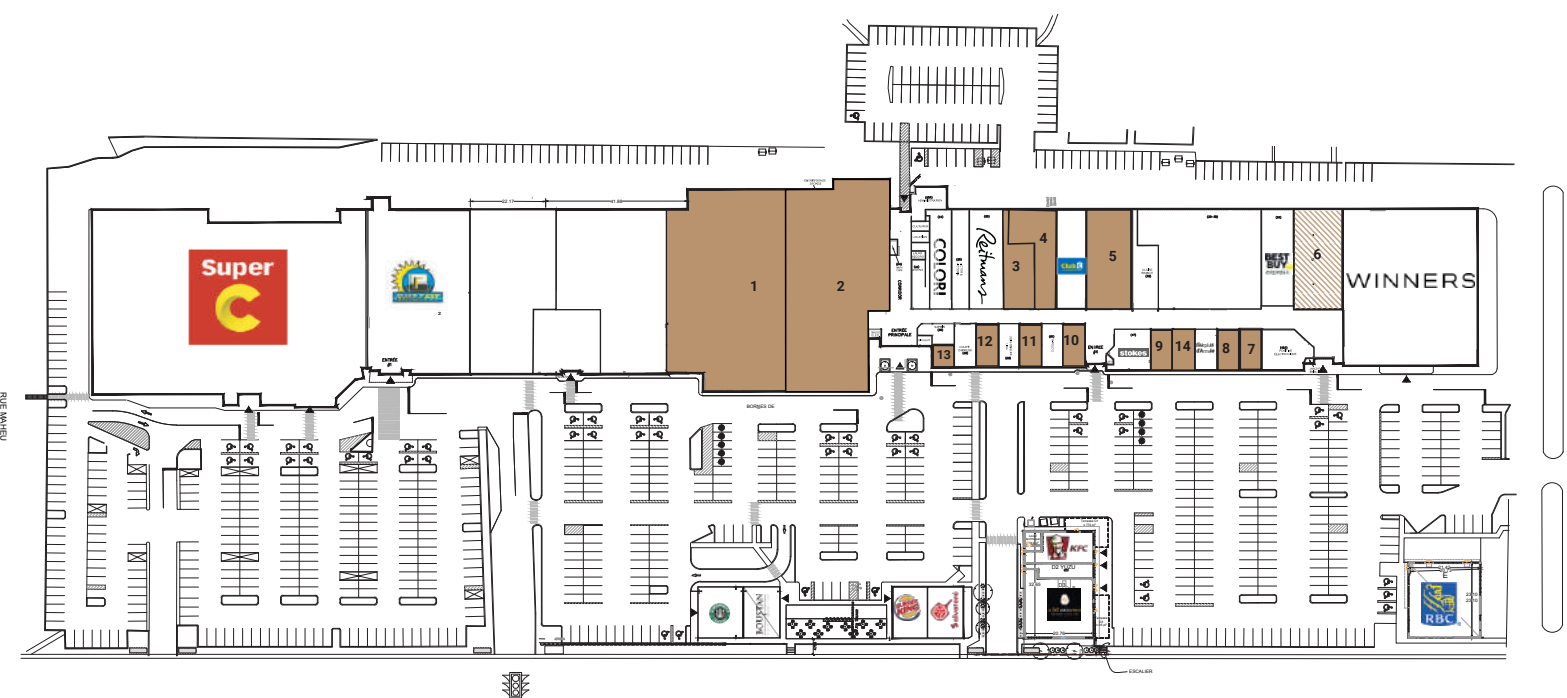


BRASSWATER


245, avenue Victoria,
Suite 801
Westmount, Qc | H3Z 2M6
T: +1 514 535 4444
www.brasswater.ca



Population	139 295
Familles Families	36 579
Foyer Housing	56 211
Salaire médian par foyer Avg household income	\$99 666
Âge moyen de la population Avg Population age	42



1	18B	20 000 pi. ca	6	40	5 000 pi. ca	11	52	940 pi. ca
2	18	16 00 pi. ca	7	42B	911 pi. ca	12	54	962 pi. ca
3	27	2 167 pi. ca	8	43	853 pi. ca	13	57	507 pi. ca
4	28	2 852 pi. ca	9	46	856 pi.ca	14	45	846 pi. ca
5	30	4 500 pi. ca	10	50	924 pi.ca			

 Mois par Mois
 Month to Month



CONTACTEZ-NOUS – CONTACT US

ÉQUIPE DE LOCATION LEASING TEAM

T: +1 514 535 4444
leasing@brasswater.ca

JORDAN KATZ

Directeur principal, location
Senior Leasing Director

T: + 514 713 5289
jkatz@brasswater.ca



BRASSWATER

245, avenue Victoria,
Suite 801
Westmount, Qc | H3Z 2M6
T: +1 514 535 4444
www.brasswater.ca