



BRASSWATER

2349 Rue Guénette

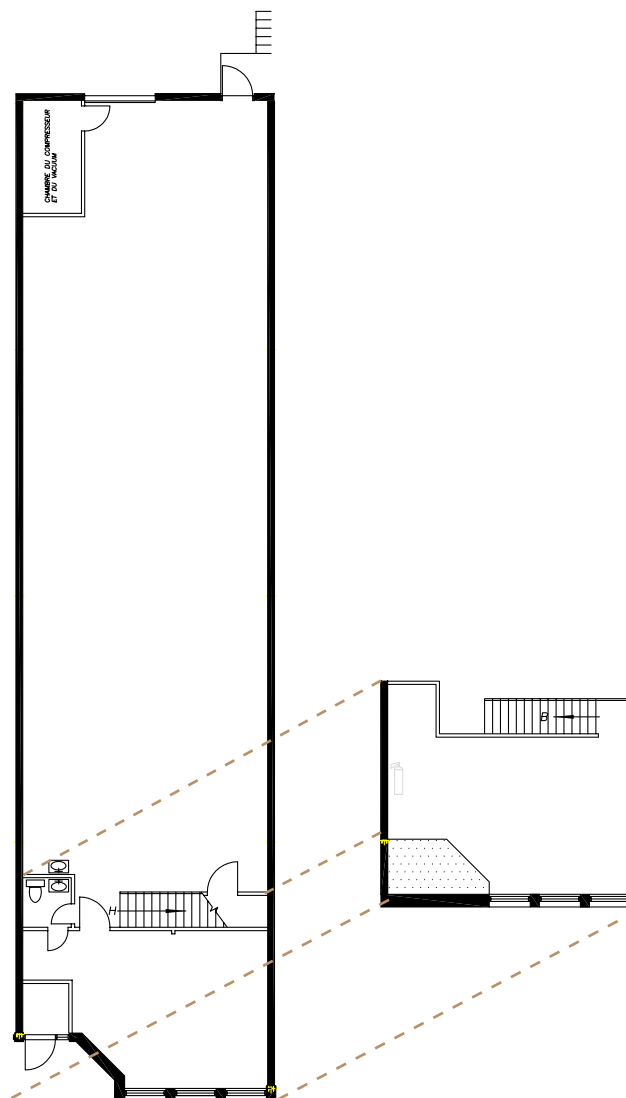
Saint-Laurent, QC

CARACTÉRISTIQUES

- 2 900 pi. ca.
- Avec quai de chargement
- Mezzanine de 800 pi. ca.

FEATURES

- 2 900 sq. ft.
- With loading dock
- Mezzanine of 800 sq. ft.



Victoria
Tenenboym

(514) 894-6505
vtenenboym@brasswater.ca