



3773 BOUL. CÔTE-VERTU SAINT-LAURENT, QUÉBEC

BUREAU - À LOUER
OFFICE - FOR LEASE

JUSQU'À 5 505 PI. CA. - UP TO 5 505 SQ. FT.

- **Facilité d'accès - Aut. 13, 15, 40** | *Easy acces to Hwy. 13, 15, 40*
- **Entouré de plusieurs commerces et services** | *Surrounded by shops and services*
- **Espaces de stationnement intérieur et extérieur** | *Large parking area*

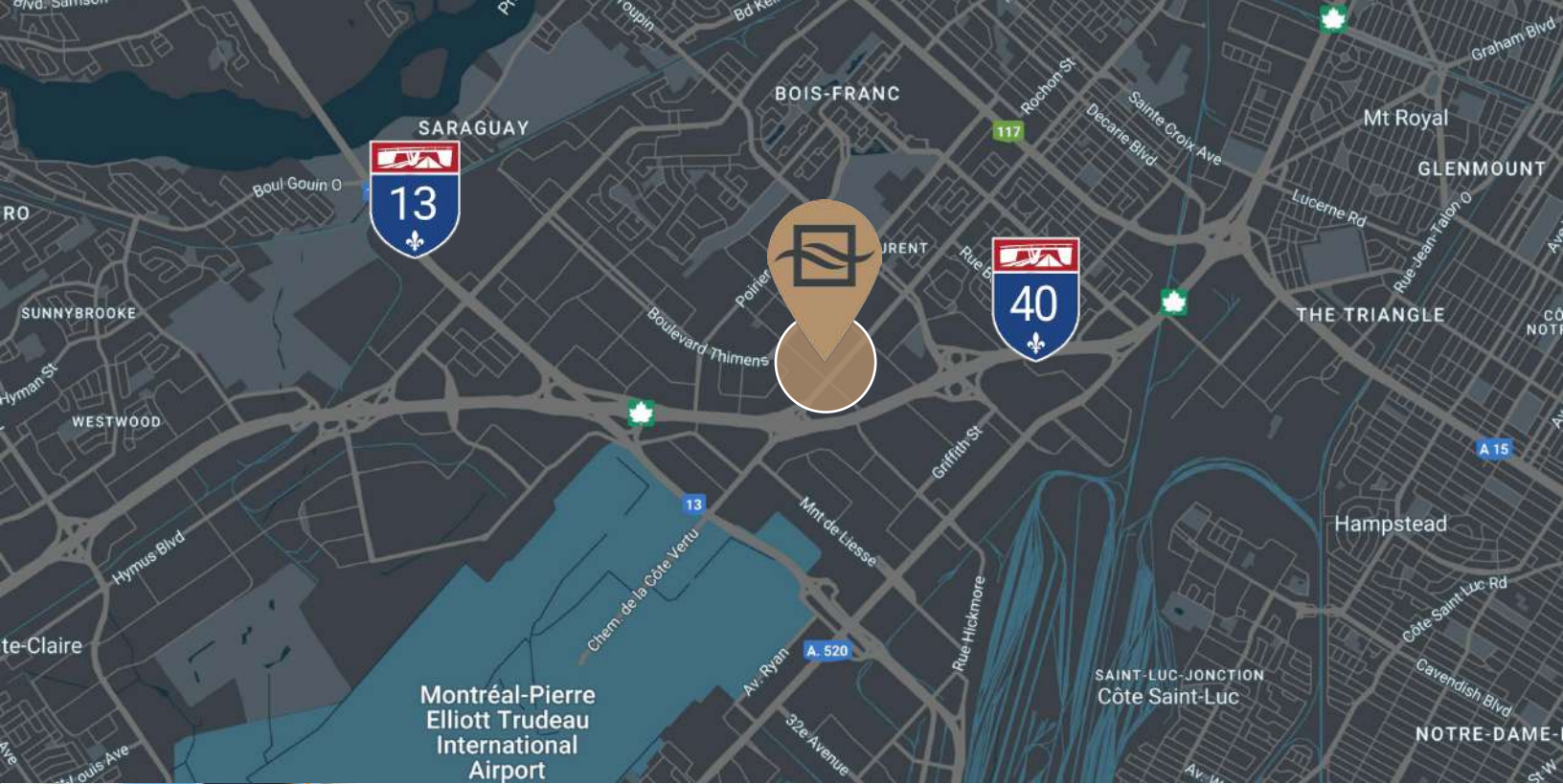


BRASSWATER

245, avenue Victoria,
Suite 801
Westmount, Qc | H3Z 2M6
T: +1 514 535 4444
www.brasswater.ca



Zonage Zoning	Bureau - Office
Surfaces disponibles (pi. ca.) Available Areas (sq. ft.)	jusqu'à up to 5 505
Stationnement intérieur Interior Parking	118 places / stalls
Stationnement extérieur Exterior Parking	50 places / stalls



TRANSPORT

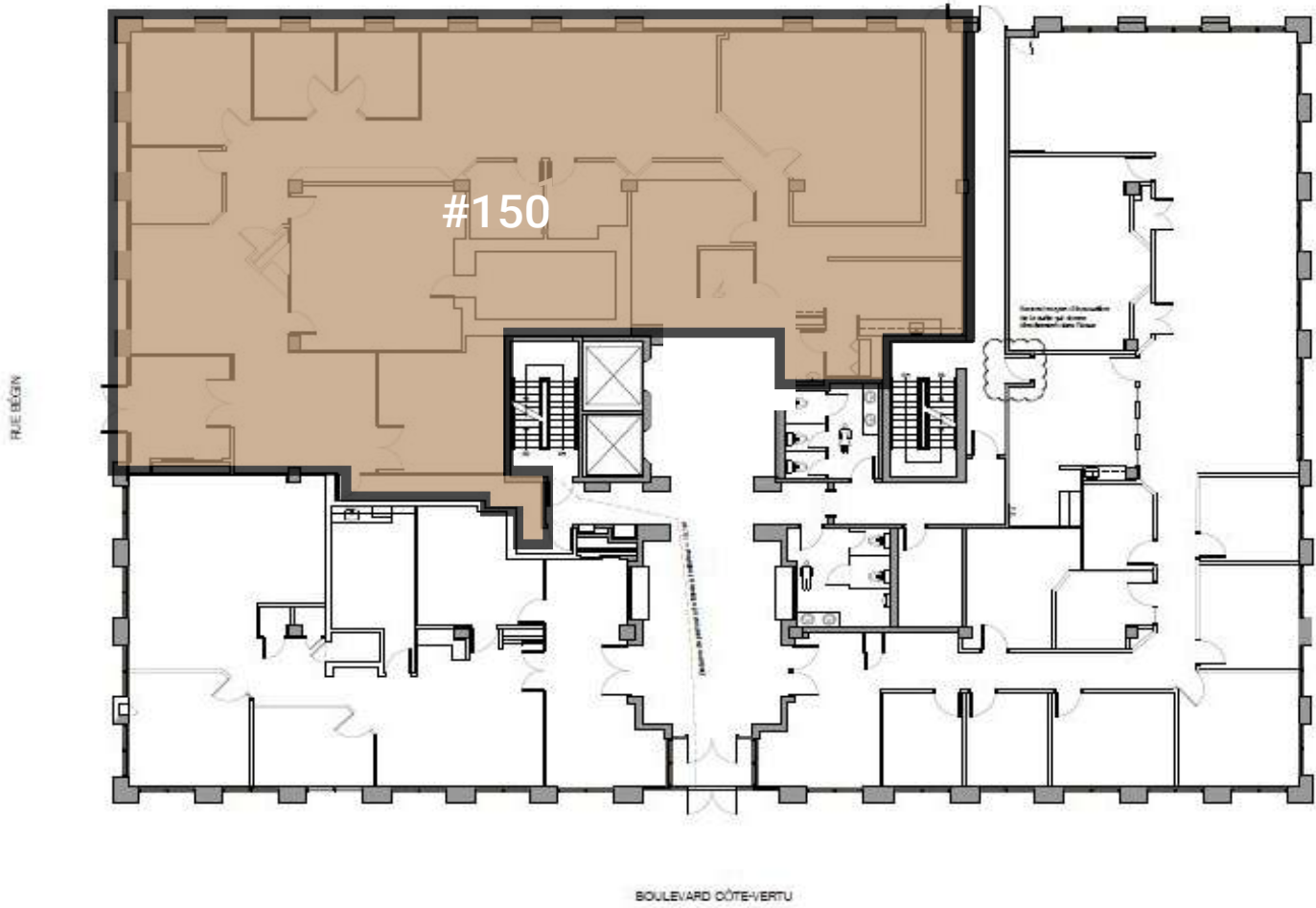
ACCÈS FACILE À L'AUTOROUTE  ET/AND  EASY HIGHWAY ACCESS

SERVICES ET COMMODITÉS | SERVICES AND AMENITIES

BANQUES BANKS	RESTAURANTS	COMMERCE SHOPS	HOTELS
DESJARDINS CIBC TD CANADA TRUST SCOTIA BANK RBC ROYAL BANK BMO BANK OF MONTREAL	STARBUCKS AMIR LA CAGE MCDONALD'S NOTRE BOEUF-DE-GRÂCE TIM HORTON'S SUSHI SHOP SUBWAYS SOUVLAKI BAR	CANADIAN TIRE SPORTS EXPERTS PLACE VERTU ADONIS DOLLARAMA WALMART GOLD'S GYM CINEMA GUZZO MEGA CENTRE COTE VERTU ENTREPÔT L'ORÉAL SHELL	MARIOTT BEST WESTERN HILTON GARDEN DAYS INN RADISSON QUALITY CROWN PLAZA

Plan de site - Site Plan

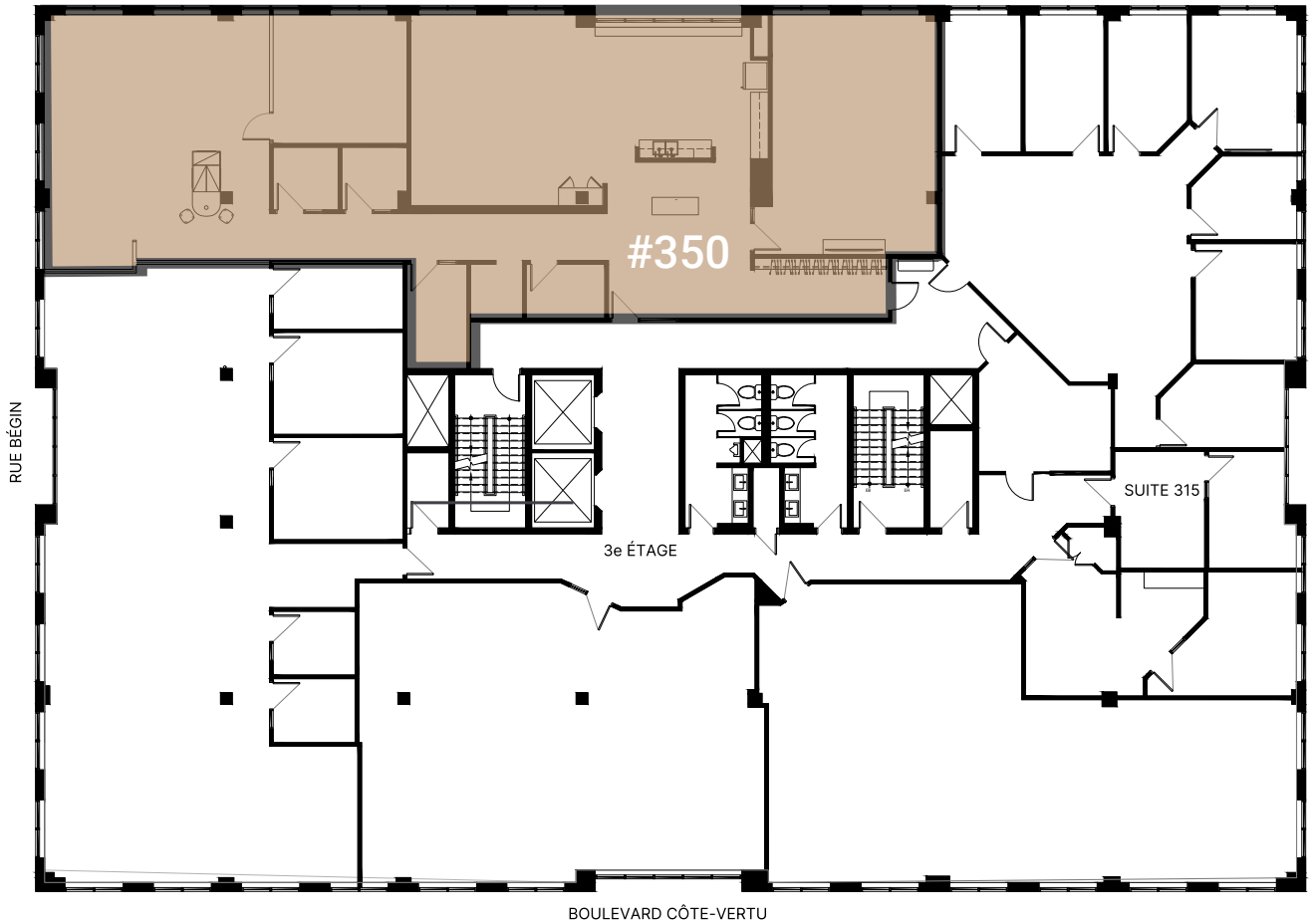
RDC - Ground Floor



150	5 505 pc/sf
-----	-------------

Plan de site - Site Plan

3e étage - 3rd Floor



350	3 862 pc/sf
-----	-------------

Plan de site - Site Plan

4e étage - 4th Floor



430	1 568 pc/sf
435	1 116 pc/sf



CONTACTEZ-NOUS – CONTACT US

ÉQUIPE DE LOCATION LEASING TEAM

T: +1 514 535 4444
leasing@brasswater.ca

JORDAN ALTMAN

Agent a la location
Leasing Agent
T: +1 514 775 1234
jaltman@brasswater.ca



BRASSWATER

245, avenue Victoria,
Suite 801
Westmount, Qc | H3Z 2M6

T: +1 514 535 4444
www.brasswater.ca