



BRASSWATER

2309 Rue Guénette

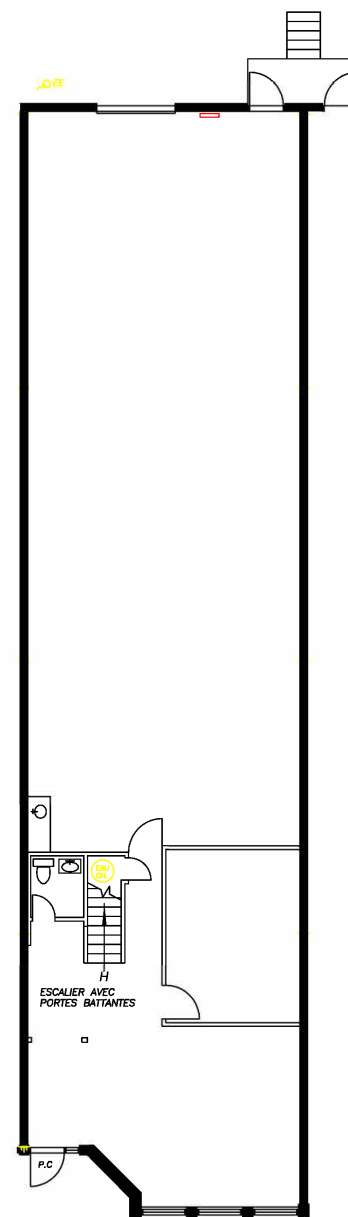
Saint-Laurent, QC

CARACTÉRISTIQUES

- 3 250 pi. ca.
- Espace bureau de 1 200 pi. ca.
- Avec quai de chargement

FEATURES

- 3 250 sq. ft.
- office of 1 200 sq. ft.
- With loading dock



Victoria
Tenenboym

(514) 894-6505
vtenenboym@brasswater.ca