



BRASSWATER

1230 Rue Bégin

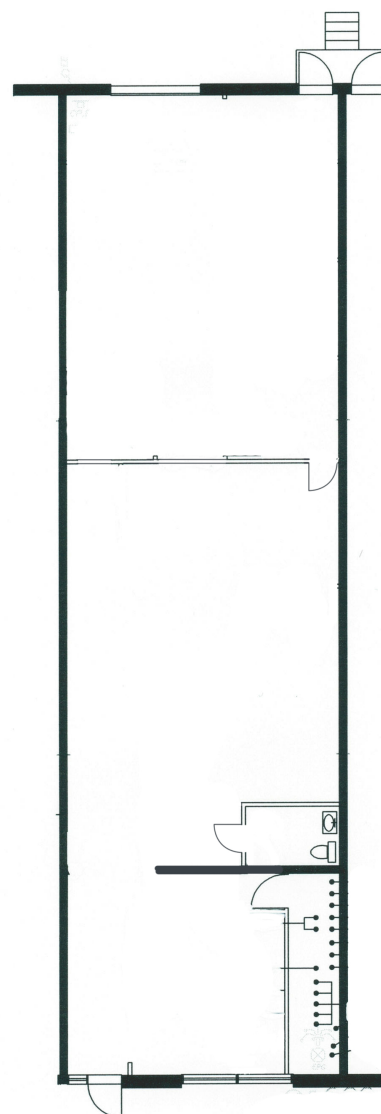
Saint-Laurent, QC

CARACTÉRISTIQUES

- 2 250 pi. ca.
- Espace bureau de 1 500 pi. ca.
- Avec quais de chargement

FEATURES

- 2 250 sq. ft.
- office of 1 500 sq. ft.
- With loading docks



Victoria
Tenenboym

(514) 894-6505
vtenenboym@brasswater.ca