



BRASSWATER

2317 Rue Guénette

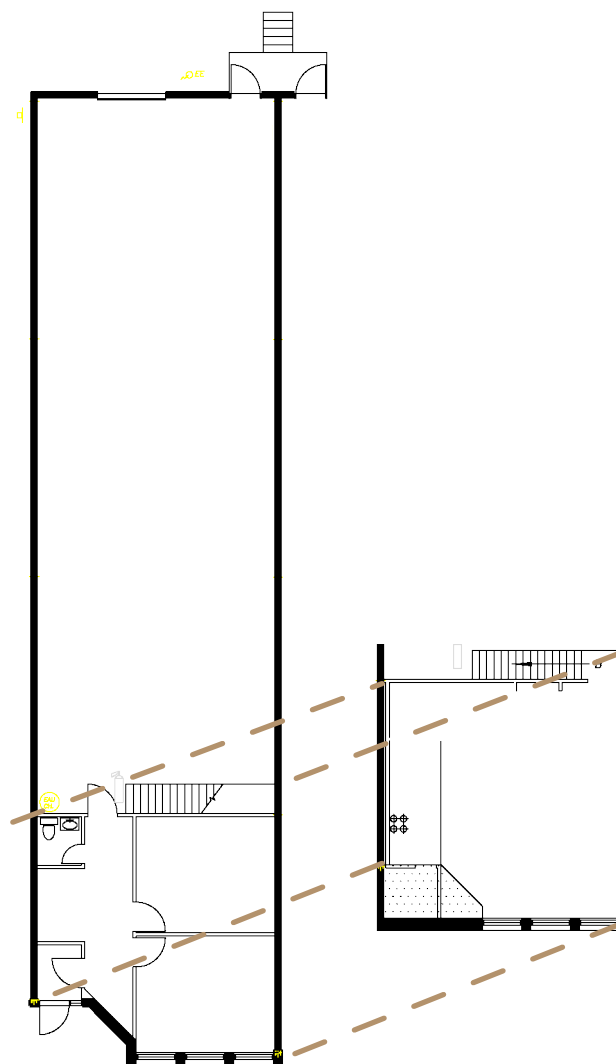
Saint-Laurent, QC

CARACTÉRISTIQUES

- 3 125 pi. ca.
- Espace bureau de 1 250 pi. ca.
- Mezzanine de 625 pi. ca.
- Avec quais de chargement

FEATURES

- 3 125 sq. ft.
- office of 1 250 sq. ft.
- Mezzanine of 625 sq. ft.
- With loading docks



Victoria
Tenenboym

(514) 894-6505
vtenenboym@brasswater.ca