



BRASSWATER

2315 Rue Guénette

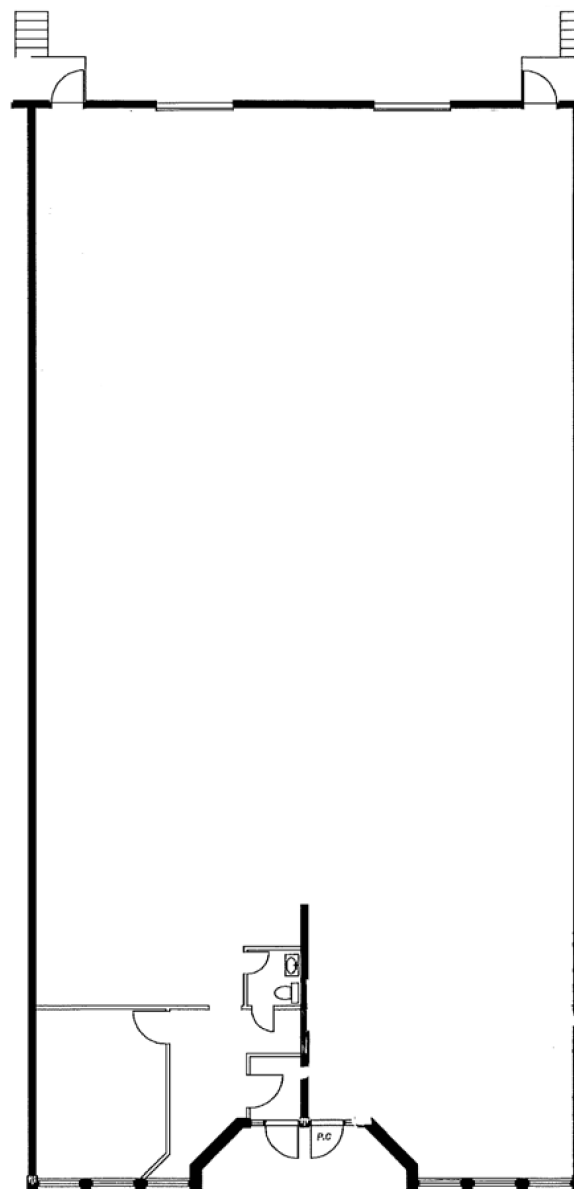
Saint-Laurent, QC

CARACTÉRISTIQUES

- 5 000 pi. ca.
- Espace bureau de 400 pi. ca.
- Avec 2 quai de chargement

FEATURES

- 5 000 sq. ft.
- office of 400 sq. ft.
- With 2 loading dock



Victoria
Tenenboym

(514) 894-6505
vtenenboym@brasswater.ca