



BRASSWATER

1280 Rue Bégin

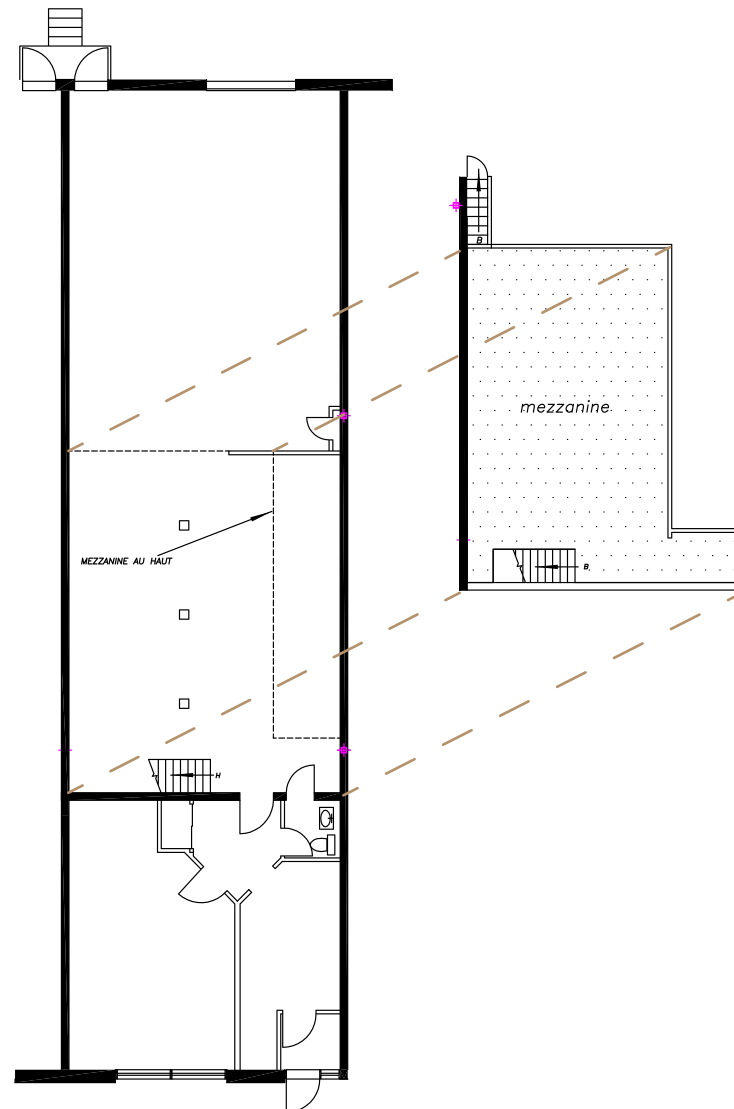
Saint-Laurent, QC

CARACTÉRISTIQUES

- 3 250 pi. ca.
- Espace bureau de 400 pi. ca.
- Avec quais de chargement

FEATURES

- 3 250 sq. ft.
- office of 400 sq. ft.
- With loading docks



Victoria
Tenenboym

(514) 894-6505

vtenenboym@brasswater.ca