



# 1900 - 1950 ST-RÉGIS

## DORVAL, (QUÉBEC)

**INDUSTRIEL - À LOUER**  
**INDUSTRIAL - FOR LEASE**

**16 382 PI. CA. DISPONIBLES - 16 382 SQ. FT. AVAILABLE**

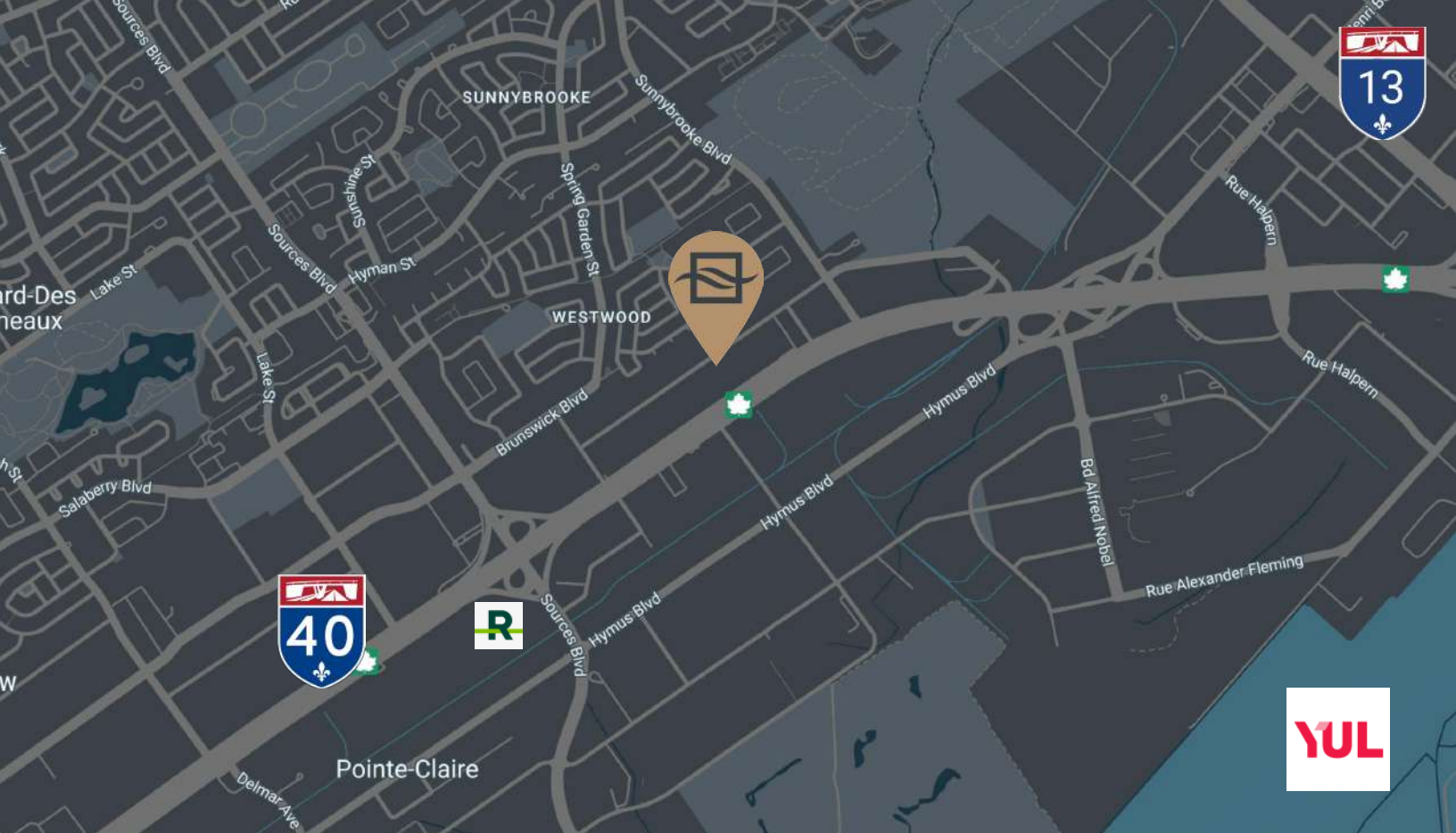
- 2 quais de chargement et 2 drive-ins | 2 loading docks and 2 drive-ins
- Hauteur libre : 16' | Clear height: 16'
- Alimentation électrique : 400A/600V | Power: 400A/600V
- proche de l'aéroport P-E Trudeau | Close to the P-E Trudeau airport
- Proche de la station REM Des Sources | Near the REM Des Sources station
- proche de l'autoroute 40 | Close to Highway 40



**BRASSWATER**

245, avenue Victoria,  
Suite 801  
Westmount, Qc | H3Z 2M6

T: +1 514 535 4444  
[www.brasswater.ca](http://www.brasswater.ca)



## TRANSPORT

ACCÈS FACILE À L'AUTOROUTE



ET/AND



EASY HIGHWAY ACCESS

## SERVICES ET COMMODITÉS | SERVICES AND AMENITIES

### BANQUES | BANKS

DESJARDINS  
CIBC  
TD CANADA TRUST  
SCOTIA BANK  
RBC ROYAL BANK  
BMO BANK OF MONTREAL

### RESTAURANTS

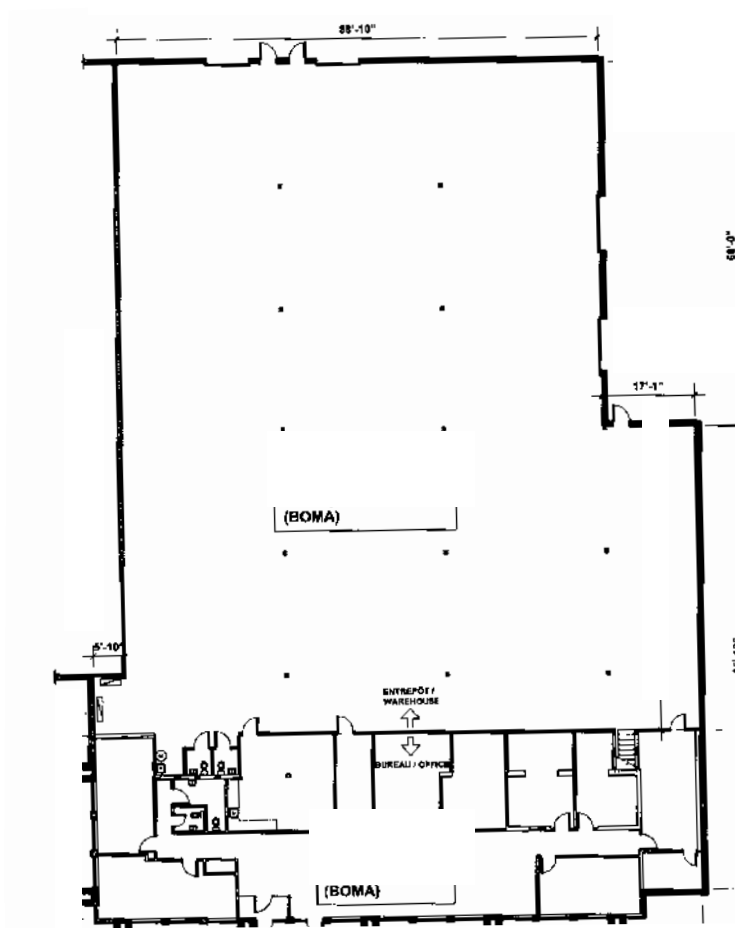
LE BISTRO FIT  
DELISH  
JACK ASTOR'S  
LA BELLE PROVINCE  
AMIR  
PIZZA SPANO  
LAFLEUR  
QUESADA  
SPICEBROS

### COMMERCE | SHOPS

CANADIAN TIRE  
SPORTS EXPERTS  
PLACE VERTU  
ADONIS  
DOLLARAMA  
WALMART  
GOLD'S GYM  
CINEMA GUZZO  
MEGA CENTRE COTE VERTU  
ENTREPÔT L'ORÉAL  
SHELL

# UNITÉ 1936

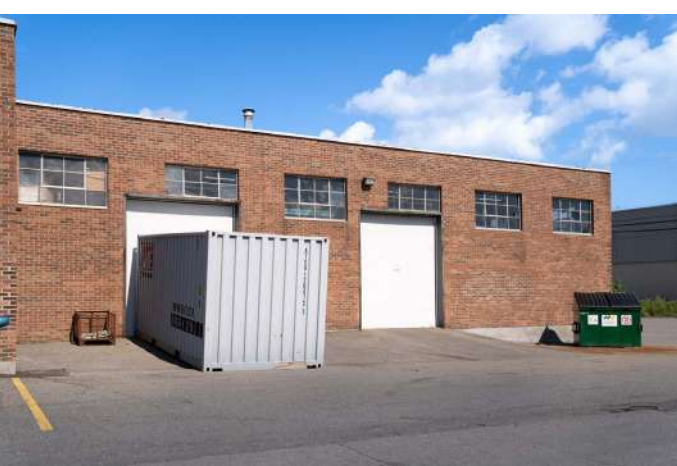
## PLAN



Zonage Zoning	Industriel Industrial
Disponible Available	Maintenant / Now
Surfaces disponibles (pi. ca.) Available Areas (sq. ft.)	16 382
Portes au sol Drive-in doors	2
Quais de chargement Loading docks	2
Espace de bureau (pi. ca.) Office space (sq. ft.)	3 780

**PHOTOS EXTÉRIEURES**

*UNITÉ 1936*





## CONTACTEZ-NOUS | CONTACT US

### **VICTORIA TENENBOYM**

Directrice principale à la location  
*Senior leasing director*

T: +1 514 894 6505  
vtenenboym@brasswater.ca

---

### **ÉQUIPE DE LOCATION LEASING TEAM**

T: +1 514 535 4444  
leasing@brasswater.ca



**BRASSWATER**

245, avenue Victoria,  
Suite 801  
Westmount, Qc | H3Z 2M6  
T: +1 514 535 4444  
www.brasswater.ca